

Bowie

STATE UNIVERSITY



Fact Book
2003-2004



Prepare for Life

Dr. Calvin W. Lowe
President

September 2004

Dear Friends:

As an annual publication of the Office of Planning, Analysis and Accountability, the *Bowie State University Fact Book* is designed to provide readers with the most up-to-date information about the University.

Bowie State University is a public and comprehensive institution dedicated to providing first-rate undergraduate and graduate education. Through this publication, the University uses a comparative analysis of fiscal data to determine the growth of the University.

It is my privilege to provide you with the *2004 Bowie State University Fact Book*, as the information provided will serve as a valuable resource.

With Best Regards,

Calvin W. Lowe

Calvin W. Lowe
President

PREFACE

The Office of Planning, Analysis and Accountability (OPAA) submits to Bowie State University's constituents this fourteenth annual University Fact Book, covering the Fall 1997 to Spring 2004 academic and fiscal periods. The information presented in this document is a compendium of essential data used in University external and internal reports, as well as in comprehensive assessments of University effectiveness. The data are compiled from various key areas of the University, including Enrollment Management, Academic Affairs, and the Office of Information Technology and are presented here longitudinally for ease in measuring Bowie State's progress. This document is a one-stop source from which to obtain frequently requested information and basic University statistics.

The OPAA staff and I hope you will find this document most useful. Please do not hesitate to offer content or layout suggestions for future publications. You may send your ideas to the OPAA office via email or snail-mail.

Gail S. Medford, Ph.D.
Director of OPAA
September 2004

TABLE OF CONTENTS

GENERAL INFORMATION **1**

HISTORY OF BOWIE STATE UNIVERSITY	1
LOCATION OF BOWIE STATE UNIVERSITY	3
THE CITY OF BOWIE	3
INSTITUTIONAL IDENTITY	4
INSTITUTIONAL CAPABILITIES	5
VISION STATEMENT	5
EMERGING INSTITUTIONAL GOALS	5
CHRONOLOGY OF MAJOR HISTORICAL EVENTS	6
UNDERGRADUATE MAJORS AND DEGREES BY DEPARTMENT	9
GRADUATE MAJORS AND DEGREES BY DEPARTMENT	10
ACADEMIC RECOGNITION: ACCREDITATION	11

UNIVERSITY CONSTITUENCY **12**

BOARD OF REGENTS	12
MARYLAND HIGHER EDUCATION COMMISSION (MHEC)	12
EXECUTIVE AND ADMINISTRATIVE STAFF	13
ACADEMIC ADMINISTRATIVE OFFICERS	14
BOARD OF VISITORS	15
BOWIE STATE UNIVERSITY FOUNDATION	16
BOWIE STATE UNIVERSITY NATIONAL ALUMNI ASSOCIATION	17
STUDENT GOVERNMENT ASSOCIATION	18

BOWIE STATE UNIVERSITY ORGANIZATIONAL CHART (2004-2005) **19**

ADMISSIONS DATA **20**

UNDERGRADUATE ADMISSIONS	20
GRADUATE ADMISSIONS	21
SAT MEAN SCORES FOR FIRST-TIME FRESHMAN	22
SAT AVERAGE SCORES FOR FIRST-TIME FRESHMAN FALL 95-02	23

ENROLLMENT DATA **24**

ANNUALIZED HEADCOUNT	24
FALL HEADCOUNT BY DEPARTMENT AND LEVEL	25
HEADCOUNT BY MAJOR AND LEVEL	26
UNDERGRADUATE HEADCOUNT BY PROGRAM AND RACE	27
GRADUATE HEADCOUNT BY PROGRAM AND RACE	28
HEADCOUNT BY ATTENDANCE STATUS, FULL-TIME AND PART-TIME	29
FIRST-TIME, FULL-TIME UNDERGRADUATE HEADCOUNT BY RACE	30
FIRST-TIME UNDERGRADUATE HEADCOUNT BY RACE AND ATTENDANCE	30
FIRST-TIME, FULL-TIME GRADUATE HEADCOUNT BY RACE	31
FIRST-TIME GRADUATE HEADCOUNT BY RACE AND ATTENDANCE	31

HEADCOUNT BY RACE AND LEVEL	32
UNDERGRADUATES BY RACE, LEVEL, AND ATTENDANCE STATUS	33
GRADUATES BY RACE, LEVEL, AND ATTENDANCE STATUS	34
TOTAL STUDENT HEADCOUNT BY RACE, LEVEL, AND ATTENDANCE STATUS	35
HEADCOUNT BY SEX AND AGE	36
HEADCOUNT BY RESIDENCE	37
<u>FULL-TIME EQUIVALENT STUDENT (FTE)</u>	38
FTE STUDENTS (FTES) TO FTE FACULTY (FTEF)	38
ANNUALIZED FTE	38
FALL FTE	38
<u>CREDIT HOURS</u>	39
AVERAGE CREDIT LOAD BY LEVEL	39
CREDIT HOURS BY DISCIPLINE FALL 01	40
CREDIT HOURS BY DISCIPLINE FALL 02	41
CREDIT HOURS BY DEPARTMENT FALL 01	42
CREDIT HOURS BY DEPARTMENT FALL 02	43
<u>MARYLAND AND EUROPE OVERVIEW</u>	44
HEADCOUNT	44
CREDIT HOURS	44
CREDIT HOURS AND FTES	45
DEGREES CONFERRED	45
FACULTY	45
<u>DEGREES AWARDED</u>	46
BY LEVEL	46
BY DEPARTMENT	47
BY MAJOR	48
BY PROGRAM, LEVEL, AND RACE 00-01	49
BY PROGRAM, LEVEL, AND RACE 01-02	50
BY RACE AND LEVEL	51
BY SEX AND LEVEL	52
<u>FINANCIAL AID</u>	53
FINANCIAL AID AWARDED BY RACE FY 01	53
FINANCIAL AID AWARDED BY RACE FY 02	54
UNDERGRADUATE FINANCIAL AID AWARD BY TYPE OF AWARD	55
UNDUPLICATED UNDERGRADUATE FINANCIAL AID RECIPIENTS WITHIN EACH TYPE OF AWARD	56
UNDUPLICATED UNDERGRADUATE FINANCIAL AID RECIPIENTS WITHIN EACH TYPE OF AWARD BY RACE	57
<u>HOUSING & RESIDENCE LIFE</u>	58

CAPACITY/OCCUPANCY/DIFFERENCE BETWEEN OCCUPANCY & CAPACITY SPRING 03, FALL 02	58
03CAPACITY/OCCUPANCY/DIFFERENCE BETWEEN OCCUPANCY & CAPACITY FALL 01, 00	59
LIBRARY DATA	60
LIBRARY INFORMATION	60
FACULTY AND STAFF	61
FULL-TIME FACULTY AND STAFF BY RACE	61
FACULTY	62
BY DEGREE HELD	62
BY RANK	62
BY RACE	62
BY AGE	62
BY SEX	63
FULL-TIME BY RANK AND SEX	63
PART-TIME BY RANK AND SEX	63
FULL-TIME BY TENURE STATUS	63
FULL-TIME FACULTY AVERAGE SALARY BY RANK AND SEX	64
REVENUES AND EXPENDITURES	65
CURRENT RESTRICTED AND UNRESTRICTED REVENUES	65
BUDGET EXPENDITURES BY PROGRAM	66
STAFF ALLOCATIONS BY PROGRAM	66

HISTORY OF BOWIE STATE

Bowie State University is an outgrowth of the first school opened in Baltimore, Maryland, on January 9, 1865, by the Baltimore Association for the Moral and Educational Improvement of Colored People, which was organized on November 28, 1864, to engage in its self appointed mission on a statewide basis. The first normal school classes sponsored by the Baltimore Association were held in the African Baptist Church, located on the corner of Calvert and Saratoga Street for the relocation of its normal school to train Negro teachers.

The Baltimore Normal School had received occasional financial support from the city of Baltimore since 1870 and from the State since 1872. In 1871, it received a legacy from the Nelson Wells Fund. This fund, established before Wells' death in February 1843, provided for the education of freed Negro children in the State of Maryland. On April 8, 1908, at the request of the Baltimore Normal School, which desired permanent status and funding as an institution for the education of Negro teachers, the State Legislature authorized its board of Education to assume control of the school. The same law re-designated the institution as Normal School No.3. Subsequently, it was relocated on a 187-acre tract in Prince George's County, and by 1914 it was known as the Maryland Normal and Industrial School at Bowie. A two-year professional curriculum in teacher education, which started in 1925, was expanded to a three-year program. In 1935, a four-year program for the training of elementary school teachers began, and the school was renamed Maryland State Teachers College at Bowie. In 1951, with the approval of the State Board of Education, its governing body, Bowie State expanded its program to train teachers for junior high schools. Ten years later, permission was granted to institute a teacher-training program for secondary education. In 1963, a liberal arts program was started and the name was changed to Bowie State College.

In 1970, Bowie State College was authorized to grant its first graduate degree, the Master of Education. A significant milestone in the development of graduate studies at Bowie State College was achieved with the Board of Trustees' approval of the establishment of the Adler-Dreikurs Institute of Human Relations in 1975. Currently, the University offers 20 undergraduate and 19 graduate degree programs, including the Bachelors in Technology, Master of Arts in Teaching, Master of Art in English, Master of Business Administration (MBA), and the doctorate in Educational Leadership.

On July 1, 1988, Bowie State College officially became Bowie State University, a change reflecting significant growth in the Institution's programs, enrollment, and service to the area. On that same day, the University also became one of 11 constituent institution of the newly formed University System of Maryland.

In fall 1992, Bowie State University took a distinctive step into the international market by becoming the first Historically Black University in the nation to expand its satellite and continuing education programs overseas. In partnership with the University of Maryland University College, Bowie State now offers graduate programs in Management Information Systems and Administrative Management to military personnel stationed in Europe and Asia.

In Spring 1994, The Maryland Higher Education Commission approved a new mission for Bowie State University, reaffirming its heritage and special commitment to the African American community and identifying a special focus on computer and technology applications, as well as an enhanced role as a teaching institution. Bowie State University now serves a student population of approximately 5,000. Its student are technologically sophisticated, culturally diverse, and internationally sensitive.

Bowie State University, in 1995, won 11-year, \$27M award from the National Aeronautics and Space Administration/National Science Foundation to become one of only six national Model Institutions for Excellence in science, engineering, and mathematics. This award significantly strengthened the Institution's academic infrastructure and enhanced an already excellent computer science and technology program that ranks first in the nation in graduating African American students with master's degrees.

The year 1996 also was a stellar one for the University: the University established its Instituted for Diversity and Multicultural Affairs (IDMA) and the schools of Education and Professional Studies, Arts and Sciences, and Graduate Studies and Research. In 1998, the IDMA launched a new initiative, supported by a \$1.9M award from the Kellogg Foundation, which is an important effort of facilitate access to higher education for an increasingly diverse

population across South-Central Maryland, especially in Anne Arundel, Montgomery, and Prince George's counties. In 1998, Bowie State also successfully earned reaffirmation of its NCATE and ILN accreditations.

In the new millennium, the University continued to achieve major milestones. The new state-of-the-art Center for Learning and Technology, a \$21M high-tech building, was completed; ground was broken for a new science building; the University earned reaffirmation of its Middle States Association accreditation; a new entrance to the campus was completed; the University won a \$1.6M grant for technology training from the U.S. Department of Labor; the University System of Maryland Board of Regents and Maryland Higher Education Commission approved revision to the University's Mission Statement and authorized the University to offer an applied Doctorate in Educational Leadership and to explore an applied doctorate in information technology and computer science.

Bowie State University has positioned itself for the challenges of the 21st Century by continuing to build systems of academic and institutional excellence.

LOCATION OF BOWIE STATE UNIVERSITY

Bowie State University is centrally located on scenic wooded land next to the city of Bowie, about five miles east of Greenbelt and Lanham, less than 15 miles west of Annapolis, and seven miles north of the Capital Beltway (95) at the New Carrollton exit at Route 450. The Baltimore-Washington Parkway is less than five miles west of the University, using either the Greenbelt Route 193 exit or the Laurel Route 197 exit. Route 197 brings motorists within 200 yards of the campus. In Winter 1989, a MARC commuter rail station opened at the University, serving the Baltimore-Washington Corridor and adding a second public transportation option to existing Metro bus service.

THE CITY OF BOWIE

This City of Bowie was incorporated in 1916, with a population of 600-700. The community of Huntington, the original Bowie, sometimes still called "Old Bowie," traces its roots to 1870 and the sale of residential building lots by railroad developers anxious to create a large town site at a major junction of the Baltimore and Potomac Railroad. Today, it is the largest municipality in Prince George's County and the third largest in the State of Maryland.

In 1958, Levitt and Sons purchased the Woodward Estate, a thoroughbred breeding farm, and built 10,000 homes on its subdivided acres. The Population of Huntingtown, now an active antique center, remained relatively stable at 1,000 as more than 35,000 new residents moved into the new Bowie.

Through multiple annexations throughout the years, Bowie grew from less than a square mile to nearly 12 miles. Its location, convenient to major employers but away from the fringe of Baltimore and Washington, assures a future market for more residential construction within and near the city. Bowie's commuters work for government agencies, private industry, and for the government and the military. Major nearby employers include the Federal government in Washington, D.C. (20 miles); State government agencies in Annapolis (15 miles) and Baltimore (18 miles); Goodard Space Flight Center (5 miles); Naval Communications Stations (18 miles); Andrews Air Force Base (18 miles); Ft. George G. Meade (9 miles); University Maryland College Park (15 miles); The Ardwick Industrial District (7 miles); and the Baltimore-Washington International Airport (18 miles).

The City of Bowie grew dramatically during the 1980's; adding office, retail, and residential space, including town homes and apartments. Future development should continue, but at a slower pace as a result of a regional economic downturn. Existing Master Plan improvements include recreation areas, single-family homes, and continuing improvement of bridges, highway, and other elements of the infrastructure. Meantime, the 1994 addition of the Class AA Bowie Baysox baseball team, a farm club of the nearby major league Baltimore Orioles franchise, adds to the attractiveness of the area.

INSTITUTIONAL IDENTITY

Established in 1865, Bowie State University is the oldest historically Black institution of higher learning in Maryland and is one of the oldest in the nation. The Institution evolved from a normal school into a comprehensive university that offers a wide array of undergraduate, graduate, and professional programs. Currently, Bowie State University serves a diverse student population, providing educational opportunities that will enable students to function in a highly technological and interdependent world. The University continues to honor its heritage of providing access to higher education for under-represented populations, with a commitment to African-Americans. Bowie State University remains a leader in the graduation of African-Americans in teacher education and technological fields.

Bowie State University fosters a supportive, rigorous, and collaborative environment that nurtures quality in academics and in professional and cross-cultural relationships. The University places particular emphasis on excellence in teaching and research on teaching methodology in order to improve the teaching-learning process. Bowie State University produces graduates who are leaders among their peers in a global community, who think critically, who value diversity, and who are committed to high moral standards.

Bowie State University is a leader in the infusion of technology into the curriculum while maintaining its role as an institution grounded in the liberal arts. The University is committed to quality education that fosters learning and enhances skill acquisition and knowledge discovery based on proven pedagogues and an up-to-date curriculum for all students at all levels. The University offers a comprehensive set of undergraduate programs in key areas such as business and management, teacher education, science and technology, and health and human services. At the post-baccalaureate level, program offering extends into areas that include the social sciences, information science and technology, and education. Students are able to pursue certificate programs as well as degrees at the masters and doctoral levels.

The University is committed to recruiting and retaining a mix of students that reflect a population of honor students as well as others who demonstrate leadership qualities, display academic potential, and exhibit the motivation to learn. Bowie State University values graduate and professional education and offers an array of post-baccalaureate programs for a global audience of adult learners through traditional and alternative means.

Bowie State University's workforce consists of a diverse group of dedicated professionals who are committed to implementing the mission of the University. The core faculty, complemented by a highly qualified adjunct faculty and supported by a skilled staff, distinguishes itself through excellence in teaching, scholarship/research, and service. The University will continue to provide excellent educational services to our students effectively and efficiently through recruitment, development, and retention of a talented workforce.

INSTITUTIONAL CAPABILITIES

Bowie State University, a regional comprehensive institution, is well positioned academically and geographically to provide quality educational services to a diverse student population in the entire Baltimore-Washington region and the State of Maryland. Bowie State's solid academic programs are comprehensive and current. They are designed to prepare students for immediate employment or graduate studies. The Institution's state-of-the-art information infrastructure, facilities, research laboratories, and technology-enabled interactive classrooms provide businesses and government with excellent opportunities for new partnerships and collaborative projects of mutual benefits.

Bowie State University is a Model Institution for Excellence, one of only six institutions in the nation as designated by NASA and the National Science Foundation, with special emphasis on quality education and research in science, engineering and mathematics. The University's Institute for Diversity and Multicultural Affairs; Alcohol, Center for Tobacco and other Drugs Center, and Institute for Development and Entrepreneurship Advancement are some of the organizations that leverage student talent and faculty expertise in research and service programs in collaboration with non-profit organizations, state and federal governments, and industry. Bowie State is also home for the Maryland Center that provides technical assistance for counties receiving funds from the tobacco settlement.

The faculty applies its expertise and training in support and leadership of many projects in community service and research and development. Bowie State students complement their academics by engaging in cooperative and internship experiences in industry and government.

VISION STATEMENT

Bowie State University is a principal center of learning in the State in computer science and information technology, mathematics, education, business, communications, arts, and health and human services; delivering quality instruction regionally, nationally, and internationally to a diverse population of students. Building on its expertise as a student-centered institution the University will provide its students with a course of study that ensures a broad scope of knowledge and understanding that is deeply rooted in expanded research activities. The University excels in teacher education, and will become the premier teacher of teachers. Through the integration of internal business processes, technology, and the teamwork of administration, faculty, and staff, the University will be recognized Statewide as a model of excellence in higher education for the effective and efficient use of human, financial, and physical resources.

EMERGING INSTITUTIONAL GOALS

1. Provide high-quality academic programs and support services.
2. Improve student recruitment and retention and graduation rates.
3. Enhance teacher education.
4. Promote Maryland's economic development especially by addressing workforce needs in information technology, teaching, and health care.
6. Promote effective and efficient use of institutional resources.
7. Increase corporate contributions and alumni annual giving.
8. Enhance institutional image globally.

CHRONOLOGY OF MAJOR HISTORICAL EVENTS

- 1865** A Graded and Normal School established by the Baltimore Association for the Moral and Educational Improvement of Colored People.
- 1893** Re-organized as a normal school to train Negro teachers.
- 1908** The Maryland State legislature authorized Board of Education to assume control of the institution.
- 1911** Dr. Don Speed Goodloe named first President. The institution relocated to Bowie, Maryland, in Prince George's County.
- 1914** Name changed to Maryland Normal and Industrial School at Bowie.
- 1921** Dr. Leonidas James named second President.
- 1925** Two-year professional curriculum in teacher education established. Shortly thereafter, expanded to three-year curriculum.
- 1935** State authorization granted for a four-year program for the training of elementary school teachers. Institution renamed the Maryland State Teachers College at Bowie.
- 1942** Dr. William Henry named third President.
- 1951** Approval granted by the State board of Education to establish a curriculum for the training of teachers for core programs in the junior high school.
- 1961** 1st Accreditation by Middle States
- 1963** Renamed Bowie State College. Liberal arts program established.
- 1967** Dr. Samuel L. Myers named fourth President.
- 1970** Graduate School, College of Continuing Education, and Weekend College established. College authorized to grant its first graduate degree, the Master of Education.
- 1975** Adler-Dreikurs Institute of Human Relations established.
- 1977** Dr. Edmund Mester Named fifth President.
- 1978** Dr. Rufus Barfield named sixth President. Bowie State graduated its first ROTC cadets as commissioned officers in the US armed service.
- 1979** Bowie State joined the Central Intercollegiate Athletic Association (CIAA), an NCAA Division II Conference.
- 1982** The College opened its own campus radio station.
- 1983** Dr. James E. Lyons, Sr., named seventh President.
- 1986** Bowie State began programming on its own cable television station.
- 1988** Bowie State received University status, was renamed Bowie State University, and joined ten other State Universities and Colleges to form the University of Maryland System of Higher Education.

- 1990** New Mission Statement designating Bowie State as a regional comprehensive University approved by the Maryland Higher Education Commission. Enrollment topped 4,000; African-American Graduate enrollment at Bowie State ranked highest in the State of Maryland.
- 1992** Bowie State's accreditation reaffirmed by the Middle States Association of Colleges and Schools.
- 1993** Dr. Nathanael Pollard, Jr. named eighth President. University begins offering graduate programs in Administrative Management and Management Information Systems in Europe, in cooperation with the University of Maryland University College (the first HBI to do so). Combined campus-based/overseas enrollment topped 5,000.
- 1994** Nursing (NLN) accreditation: BSN reaffirmed for 8 years and MNS (initially awarded for 5 years).Carnegie Commission classifies Bowie State University as a Comprehensive I" institution.
- University confers first degrees in European program.
- Designed and implemented the Pilot Program of the University College of Excellence (Freshman/Sophomore experience).
- Dedicated Alex Haley Hall, a new state-of-the-art residence complex.
- Ranked 7th among the largest producers of African-American recipients of the Master's degree in computer science.
- 1995** Became the only school in the University of Maryland System to be approved by the Maryland Board of Nursing to offer the Family Nurse Practitioner Program.
- Identified by National Aeronautics for space Administration (NASA) for funding in "Model Institutions for Excellence Program, which awards \$2.4 million a year for up to 11 years.
- Won a place in the American Council on Education/Kellogg Project on Leadership and Institutional Transformation.
- Initiated the International Flag Raising Ceremony to recognize the University's International Population, bring more focus to expanding opportunities, and to formalize its movement into the international market. The following countries' flags were raised: Federal Republic of Brazil, Republic of Chad, People's Republic of China, Republic of India, Republic Kenya, Kingdom of Nepal, Federal Republic of Nigeria, and Republic of South Africa.
- Master of Arts in Teaching (MAT) approved by MHEC to begin in Spring 1996.
- Created the Office of Information Technology (OIT).
- Initiated a University College of Excellence (UCE), following the completion of the UCE Pilot Program in 1994/95
- Created the School of Professional Studies and the School of Arts and Sciences.

Initiated international exchanges and technical assistance agreements with Brazil, Grenada, and the nation of Chad.

1996 The State of Maryland endorsed construction of a 120,000-square-foot, \$30 million Center for Learning and Technology at Bowie State.

The Goddard Space Flight Center and Allied Signal Corporation made plans to locate a mission-control center for a space shuttle at Bowie State University.

Competed for and won a \$4 million dollar grant from National Institutes of Health (NIH) to develop programs in structural biology.

The RN/MSN program approved by the Maryland Board of Nursing to begin in Fall 1996.

1997 Implementation of an M. A. in English, M. S. in Computational and Applied Mathematics, and a Reconfigured Fine Arts Program.

Incorporation of Education into the name of the School of Professional Studies.

Implementation of Project AcCess II and Institute for Development and Entrepreneurship Advancement (IDEA).

Implementation of the B. S. in Technology in Western Maryland.

Implementation of the \$1.4 million Telecommunication/Telecommuting. Center by the School of Continuing Education and Extended Studies. Establishment of the University Council, the Department of Mathematics and the Department of Natural Sciences.

1999 Dr. Wendell Holloway named interim President.

The Maryland Higher Education Commission approved the first doctoral program for the University in educational leadership.

2000 Dr. Calvin Lowe named ninth President. Significant re-engineering of administration. Received a \$500,000 Access and Success Grant to enhance student retention.

2000 Dedication of 120,000 square-foot Center for Learning and Technology, the first new academic building in over 20- years.

2001 First HBCU in Maryland to initiate a Laptop program for freshmen.

2002 First Institution in the USM consortium to implement the People Soft Financial module.

2002 Dedication of New Science building.

2003 Maryland Center at Bowie State University approved as an affiliate foundation.

The new School of Business approved by the Board of Regents.

**BOWIE STATE UNIVERSITY'S ACADEMIC PROGRAMS
UNDERGRADUATE MAJORS AND DEGREE BY DEPARTMENT
2003-2004**

DEPARTMENT	MAJOR/CONCENTRATIONS	DEGREE
Accounting, Finance and Economics	Accounting Banking and Finance Economics	BS
Behavioral Sciences and Human Service	Pedology	BA BS
	Criminal Justice	BS
	Criminal Justice/Law Enforcement	BS
Communication	Media Management	
	Public Relations	
	Broadcast Journalism, Telecommunication	BA BS
Computer Science	Computer Science, Computer Technology	BS
English and Modern Languages	Language and Literature	BA
	Creative Writing	
	Secondary Education	BS
History and Government	History	BS BA
	Government	BS BA
	Social Sciences/History Education	BS
Fine and Performing Arts	Art	BA
	Computer Graphics Art	
	Music, Music Technology	
Management Information System	Business Information System	BS
Management, Marketing and Public Administration	General Business Management, Marketing	BS
Mathematics	Pure Mathematics	BS
	Applied and Computational Mathematics	
	Mathematics Education, Special Program of Study	
Mathematics/Engineering	Dual Degree Mathematics/Engineering Track	BS
Natural Sciences	Biology	BS
	Science Education	BS
Nursing: BSN	Nursing	BS
Nursing: RN to BSN	Nursing	BS
Psychology	Psychology	BA BS
Social Work	Social Work	BS
Technology	Human Service	BS
Teaching, Learning and Professional Development	Early Childhood/ Special Education Elementary Education	BS

**GRADUATE MAJORS AND DEGREES BY DEPARTMENT
2004-2005**

DEPARTMENT	MAJOR	DEGREE	
Behavioral Sciences and Human Services	Human Service	Certificate	
	Human Resource Develop. Psychotherapy	MA Post-Master's Certificate	
	Administrative Management* Management Info. System Information System Analyst	MA MS Certificate	
Business, Public Administration and Economics			
Communications	Organizational Communications Specialists	MA Certificate	
Teaching, Learning and Professional Development	Elementary Education	MED	
	Counseling Psychology	MA	
	Family Counseling	Certificate	
	Reading Education	MED	
	Secondary Education	MED	
	Special Education	MED	
	Educational Leadership	EDD	
	School Administration and Supervision	MED	
	Computer Science	Computer Science	MA
	Nursing	Nursing	MSN
Mathematics	Applied Computational Mathematics	MS	
English and Modern Languages	English	MA	

ACADEMIC RECOGNITION

ACCREDITATION:

Middle States Association of Colleges and Schools

Maryland State Department of Education

Maryland Board of Nursing

Computing Science Accreditation Board

Association of Collegiate Business Schools and Programs

National Council for the Accreditation of Teacher Education

National Council on Social Work Education

Council on Social Work Education

National League for Nursing

**UNIVERSITY SYSTEM OF MARYLAND (USM)
BOARD OF REGENTS
2004-2005**

The Board of Regents of the University System of Maryland is the governing body of the System. Through the constituent institution academic units of the System, the Board of Regents provides educational services, including undergraduate and graduate education, professional programs, and research. The Board also approves both the capital and operating budgets of the System, has the power to accept gifts, to invest funds, and to make contracts for the System. Individuals serving on the Board of Regents during as of fall 2003 are listed below.

Mr. Clifford M. Kendall, Chairman
Mr. David H. Nevins, Vice Chairman
Orlan M. Johnson., Treasurer
Dr. Patricia S. Florestano, Assistant Treasurer
Mr. Robert L. Pevenstein, Secretary
Nian Rodale Houghton, Assistant Secretary
Jeremy Horine, Student Regent

Ms. Adela M. Acosta
Mr. Thomas B. Finan, Jr.
Mr. R. Michael Gill
The Honorable Marvin Mandel
The Honorable Lewis R. Riley, Ex Officio

Mr. Richard E. Hug
Mr. Robert L. Mitchell
Mr. A. Dwight Pettit
The Honorable, James C. Rosapepe
The Honorable, Joseph D. Tydings

MARYLAND HIGHER EDUCATION COMMISSION (MHEC)

The Maryland Higher Education Commission, the statewide coordinating board for post secondary education, has responsibility for higher education planning, It approves mission statements of all post secondary institutions, the academic programs of public institution, and makes recommendations on the academic programs of private institutions. The Commission also recommends a budget for higher education to the Governor and the General Assembly. The Secretary for Higher Education, a member of the Governor's Cabinet, heads the Commission. The 2000-2001 Commission members are:

Mr. John J. Oliver, Jr. Chairman

Mr. Donald J. Slowinski, Sr. Vice Chairman
Ms. Joann A. Boughman
Mr. Aja M. Campbell
Ms. Ilona Modly Hogan

Mr. Emmett Paige, Jr.
Mr. Richard P. Streett, Jr.
Ms. Anne Osborn Emery
Mr. Kevin M. O'Keefe

**Dr. Calvin W. Burnett
Secretary of Higher Education**

ADMINISTRATIVE OFFICES
2004-2005
PRESIDENT - Dr. Calvin W. Lowe
EXECUTIVE STAFF

Chief of Staff
Provost
Executive Assistant
Special Assistant
Special Assistant
Vice President for Finance and Administration
Vice President for External Relations
Dean of Student Affairs and Campus Life

Dr. William P. Marable
Dr. Patricia Pierce Ramsey
Dr. Granville Sawyer
Dr. Dianne Maloney-Krichmar
Dr. Eleanor Walker
Ms. Willie Hughey
Ms. Maitland Dade
Mr. Renardo A. Hall

ADMINISTRATIVE STAFF

Assistant Dean of Student Affairs and Campus/Judicial Affairs
Assistant Vice President Finance and Budget
Assistant Vice President, Enrollment Management
Special Assistant to the Provost
Senior Director, Human Resources
Senior Director (Acting) Office of Information Technology
Director, Athletics
Director, Alumni Relations
Director, of Admission
Director, BSU Police Dept.
Director, Facility Management
Director, Federal Research and Development
Director, Financial Aid
Director, Media Operations
Director, Office of Planning, Analysis and Accountability
Director, Procurement
Director, Public Relations and Marketing
Director, Registrar
Director, Student Life
Manager, Print Center
Director, (Interim) University Wellness Center

Mrs. Dorothy Holland
Mrs. Sharon Evans
Mr. Donald Kiah
Dr. Kimberly Whitehead
Ms. Sheila Hobson
Ms. Marisa Greenlee
Mr. Derek Carter
Ms. Monie Broadus
Mr. Shingiral Chanaiwa
Vacant
Mr. Michael Harris
Mrs. Joyce Taylor
Mrs. Veronica Pickett
Mrs. Vear Chesley
Dr. Gail Medford
Mr. Steve Jost
Mrs. Deborrah Banks
Mrs. Carlene Wilson
Mr. Jessie Wise
Ms. Carlise E. Murden
Mr. Jessie Wise

ACADEMIC ADMINISTRATIVE OFFICERS

<i>Dean, (Interim) School of Arts and Sciences</i>	Dr. Cosmos Norwarkfor
Chair, Communications	Dr. Chucka Onwumechilli
Chair, Computer Science	Dr. Sadanand Srivastava
Chair, English and Modern Languages	Dr. Sidney Walker
Chair, History and Government	Dr. William Lewis
Chair, Fine and Performing Arts	Dr. Clarence Knight
Chair, Mathematics	Dr. Nelson Petulante
Chair, Natural Sciences	Dr. Elaine Davis
Chair, Military Science	LT. Charles Marshall
Dean, School of Education	Dr. Vernon Polite
Chair of Educational Leadership	Dr. Barbara Jackson
Chair, Teaching, Learning and Professional Development	Dr. Barbara Smith
Chair, Counseling	Dr. Rhonda Jeter
<i>Dean, School of Professional Studies</i>	Dr. Joyce Bowles
Chair, Behavioral Sciences and Human Services	Dr. Elliott Parris
Chair, Nursing	Dr. Josephine McCaskill
Chair, Psychology	Dr. Cheryl Blackman
Chair, Social Work	Dr. Doris Polston
<i>Dean, (Acting) School of Graduate Studies and Continuing Education</i>	Dr. Dianne Krichmar
Director, Off-Campus Programs	Mrs. Marsha Mims-Word
<i>Dean, (Interim) School of Business</i>	Dr. Mathias Mbah
Chair, Accounting, Finance and Economics	Dr. Samuel Duah
Chair, Management, Marketing and Public Administration	Dr. Shelton Rhodes
Chair, Management Information Systems	Dr. David Anyiwo
Coordinator, Student Activities and Leadership	Mr. Jarrod Dockett
Dean of the Library	Dr. Richard Bradberry
Director, of the Center for Success and Retention	Mrs. Doris Gillard
Director, Model Institutions form Excellence	Dr. Elaine Davis

**BOWIE STATE UNIVERSITY
BOARD OF VISITORS
2004 -2005**

Bowie State University's Board of Visitors was established by the University of Maryland in accordance with Maryland State Senate Bill 683. Its purpose is to: (1) provide service to the President; (2) assist in community relations; (3) assist in institutional development; and (4) provide any other assistance requested by the President. The Board, consisting of members representing academia, corporations, foundations and legal profession, includes the following:

The Honorable William D. Missouri, Chair

Mrs. Judy Holland-Burton
Ms. Igrid Cooper
Ms. Beverly Perry
Dr. Walter J. Leonard

Ms. Jacqueline W. Sales
The Honorable Alexander Williams, Jr.
The Honorable Douglas J.J. Peters
Mr. Jason Groves

**BOWIE STATE UNIVERSITY FOUNDATION
2004-2005**

State legislation has provided for state college and university foundations to serve as the vehicle for receiving funds for educational purposes from private sources. These funds are subsequently used to benefit programs and projects at the institution for which the foundation is named.

The Bowie State University Foundation grew out of an interest group that convened in 1971. It was established to provide interested constituencies an opportunity to assist the University in developing its various programs of educational enrichment.

EXECUTIVE COMMITTEE

Mr. Timothy J. Adams, Chairman
Mr. A. Thomas McLamore, Vice Chairman
Mr. M. A. "Mike" Little, Secretary
Mr. William Moore, Treasurer
Dr. Calvin W. Lowe, University President

BOARD OF DIRECTORS

Mr. Timothy J. Adams
Mr. M. A. "Mike" Little
Mr. Henry Arrington
Mr. A. Thomas McLamore
Mrs. Barbara Davis
Mr. William Moore

Mr. Vaughn Evans
Mr. Sidney Sheppard
Mr. Legusta Floyd
Ms. Betty B. Turner
Mrs. Mildred Gray
Mr. Fred L. Valentine

EX-OFFICIO MEMBERS

Dr. Calvin W. Lowe
Ms. Willie Hughey
Ms. Maitland Dade
Dr. Patricia Pierce Ramsey
Mr. William Davidson, III

**THE BOWIE STATE UNIVERSITY
NATIONAL ALUMNI ASSOCIATION
2003 - 2004**

The major purposes of the Bowie State University National Alumni Association are (1) to advance the cause of education and (2) to establish a mutually beneficial relationship between the University and the Association.

Any graduate or former student of Bowie State University, formerly Bowie State College, Maryland State Teachers College, Bowie Normal & Industrial School #3 or Maryland Normal School, in good standing, is eligible for membership.

NATIONAL ALUMNI ASSOCIATION OFFICERS

McKinley Hayward, President
Henry Williams, 1st Vice President
Legusta Floyd, 2nd Vice President
Anita Ford, Corresponding Secretary
Barbara Butler, Treasurer
Pamela Ambush-Burriss, Recording Secretary
Evelyn D. Wright, Financial Secretary
Sidney Sheppard, Historian
Betty Turner, Parliamentarian
Diane Wilson-Bragg, Chaplain

EX – OFFICERS

Monie Broadus, Director of Alumni Relations

CHAPTER PRESIDENTS

Anne Arundel
Baltimore
Fred/Carroll
Lower Shore
Harford/Cecil
Montgomery
New York/New Jersey
Prince George's
Upper Shore
Tri-County
Virginia
Washington, D.C.
Alumni 2000
Campus Alumni
Nursing Alumni

Patricia Handy
Clarence Mollock
Edna Johnson
McKinley Hayward
Cora C. Wilson
Henry Williams
Inactive
Linda Butler
Inactive
William Moore
Inactive
Qawi Robinson
Darren Swain
Doris Gilliard
Brenda Overton

**BOWIE STATE UNIVERSITY
STUDENT GOVERNMENT ASSOCIATION (SGA)
EXECUTIVE BOARD OFFICERS
2004 - 2005**

Jarrold L. Hines	President
Derrell L. Owens	Vice President
Elena Berrocal	Executive Branch Secretary
Nicole Williams	Legislative Branch Secretary
Michael Wigfall	Executive Branch Treasurer
Cara Hairston	Executive Member-at-Large
Otis Dupree	Solicitor General
Jarrold Dockett	Student Activities Coordinator

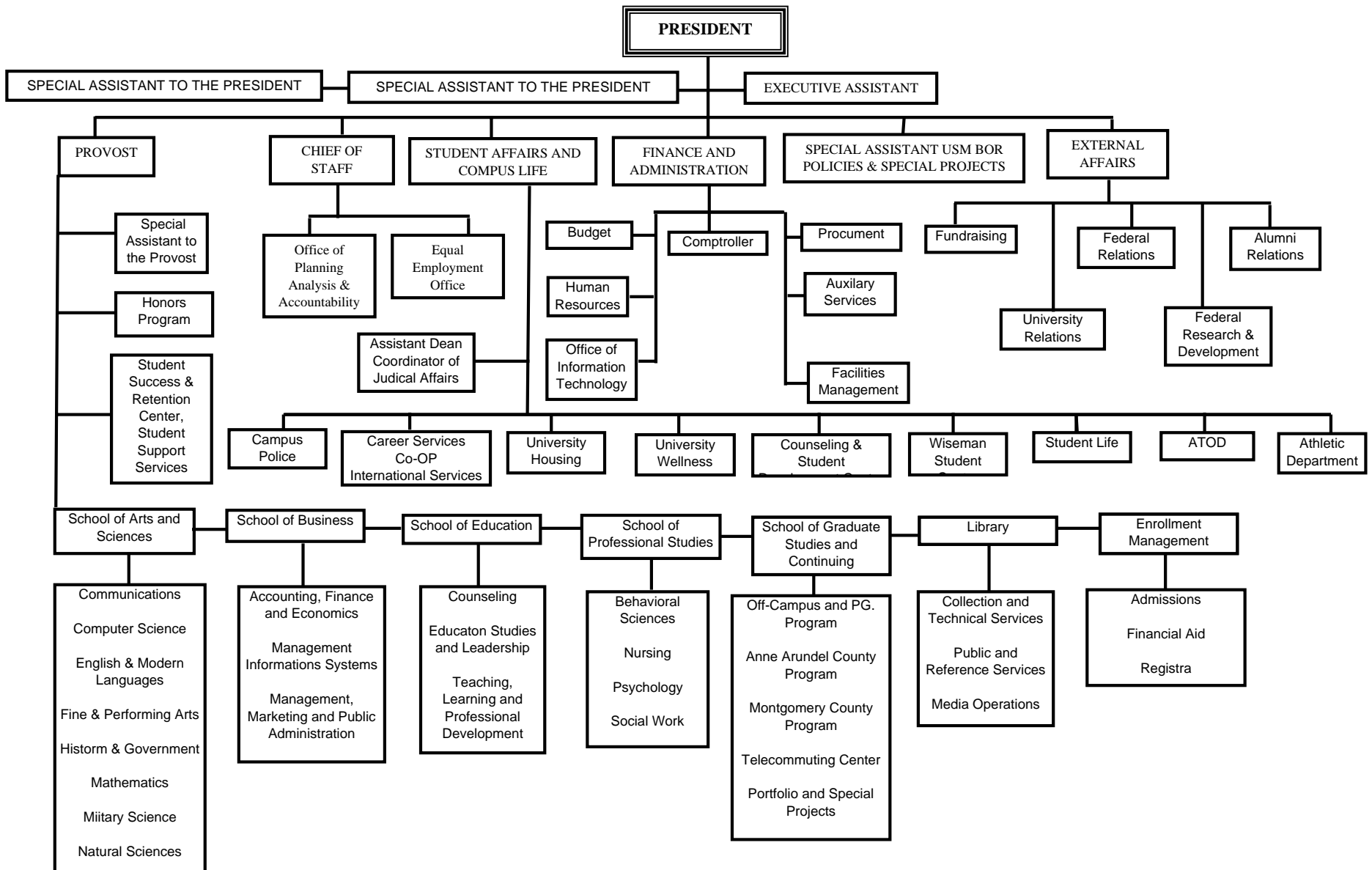
MR. BOWIE STATE UNIVERSITY

Mr. Ashanta McGhee

MISS BOWIE STATE UNIVERSITY

Ms. Tameka J. Wilson

BOWIE STATE UNIVERSITY ORGANIZATIONAL CHART: 2004-2005



Admissions and Enrollment

BOWIE STATE UNIVERSITY

Undergraduate Admissions Data

Applied/Accepted/Enrolled

Fall 1997 Fall 1998 Fall 1999 Fall 2000 Fall 2001 Fall 2002 Fall 2003

Total Population

# Applicants	2,790	3,064	2,643	2,831	3,259	3,947	4,871
# Accepted	1,363	1,478	1,265	1,403	1,836	2,178	2,450
# Enrolled	753	804	785	793	1,099	1,022	1,168
% Applicants Accepted	48.9%	48.2%	47.9%	49.6%	56.3%	55.2%	50.3%
% Applicant Enrolled	27.0%	26.2%	29.7%	28.0%	33.7%	25.9%	24.0%
% Enrolled per Accepted	55.2%	54.4%	62.1%	56.5%	59.9%	46.9%	47.7%

Fall 1997 Fall 1998 Fall 1999 Fall 2000 Fall 2001 Fall 2002 Fall 2003

First-time Freshmen

# Applicants	1,861	2,077	1,603	1,659	2,031	2,600	3,537
# Accepted	791	921	694	748	1,073	1,384	1,704
# Enrolled	371	422	356	370	610	569	767
% Applicants Accepted	42.5%	44.3%	43.3%	45.1%	52.8%	53.2%	48.2%
% Applicants Enrolled	19.9%	20.3%	22.2%	22.3%	30.0%	21.9%	21.7%
% Enrolled per Accepted	46.9%	45.8%	51.3%	49.5%	56.8%	41.1%	45.0%

Fall 1997 Fall 1998 Fall 1999 Fall 2000 Fall 2001 Fall 2002 Fall 2003

Transfer Students

# Applicants	929	987	1,040	1,172	1,228	1,347	1,334
# Accepted	572	557	571	655	763	794	746
# Enrolled	382	382	429	423	489	453	401
% Applicants Accepted	61.6%	56.4%	54.9%	55.9%	62.1%	58.9%	55.9%
% Applicants Enrolled	41.1%	38.7%	41.3%	36.1%	39.8%	33.6%	30.1%
% Enrolled per Accepted	66.8%	68.6%	75.1%	64.6%	64.1%	57.1%	53.8%

BOWIE STATE UNIVERSITY

Graduate Admissions Data Applied/Accepted/Enrolled

Fall Fall Fall Fall Fall Fall Fall
1997 1998 1999 2000 2001 2002 2003

Total Population

# Applicants	966	869	607	776	747	770	728
# Accepted	806	717	280	471	556	554	486
# Enrolled	573	501	188	293	375	354	289
% Applicants Accepted	83.4%	82.5%	46.1%	60.7%	74.4%	71.9%	66.8%
% Applicant Enrolled	59.3%	57.7%	31.0%	37.8%	50.2%	46.0%	39.7%
% Enrolled per Accepted	71.1%	69.9%	67.1%	62.2%	67.4%	63.9%	59.5%

Fall Fall Fall Fall Fall Fall Fall
1997 1998 1999 2000 2001 2002 2003

First-time Graduate Student

# Applicants	923	832	603	751	756	751	713
# Accepted	775	691	279	457	512	545	479
# Enrolled	546	485	187	284	338	348	284
% Applicants Accepted	84.0%	83.1%	46.3%	60.9%	67.7%	72.6%	67.2%
% Applicants Enrolled	59.2%	58.3%	31.0%	37.8%	44.7%	46.3%	39.8%
% Enrolled per Accepted	70.5%	70.2%	67.0%	62.1%	66.0%	63.9%	59.3%

Fall Fall Fall Fall Fall Fall Fall
1997 1998 1999 2000 2001 2002 2003

Transfer Graduate Students

# Applicants	43	37	4	25	44	19	15
# Accepted	31	26	1	14	19	9	7
# Enrolled	27	16	1	9	15	6	5
% Applicants Accepted	72.1%	70.3%	25.0%	56.0%	43.2%	47.4%	46.7%
% Applicants Enrolled	62.8%	43.2%	25.0%	36.0%	34.1%	31.6%	33.3%
% Enrolled per Accepted	87.1%	61.5%	100.0%	64.3%	78.9%	66.7%	71.4%

BOWIE STATE UNIVERSITY

SAT Scores

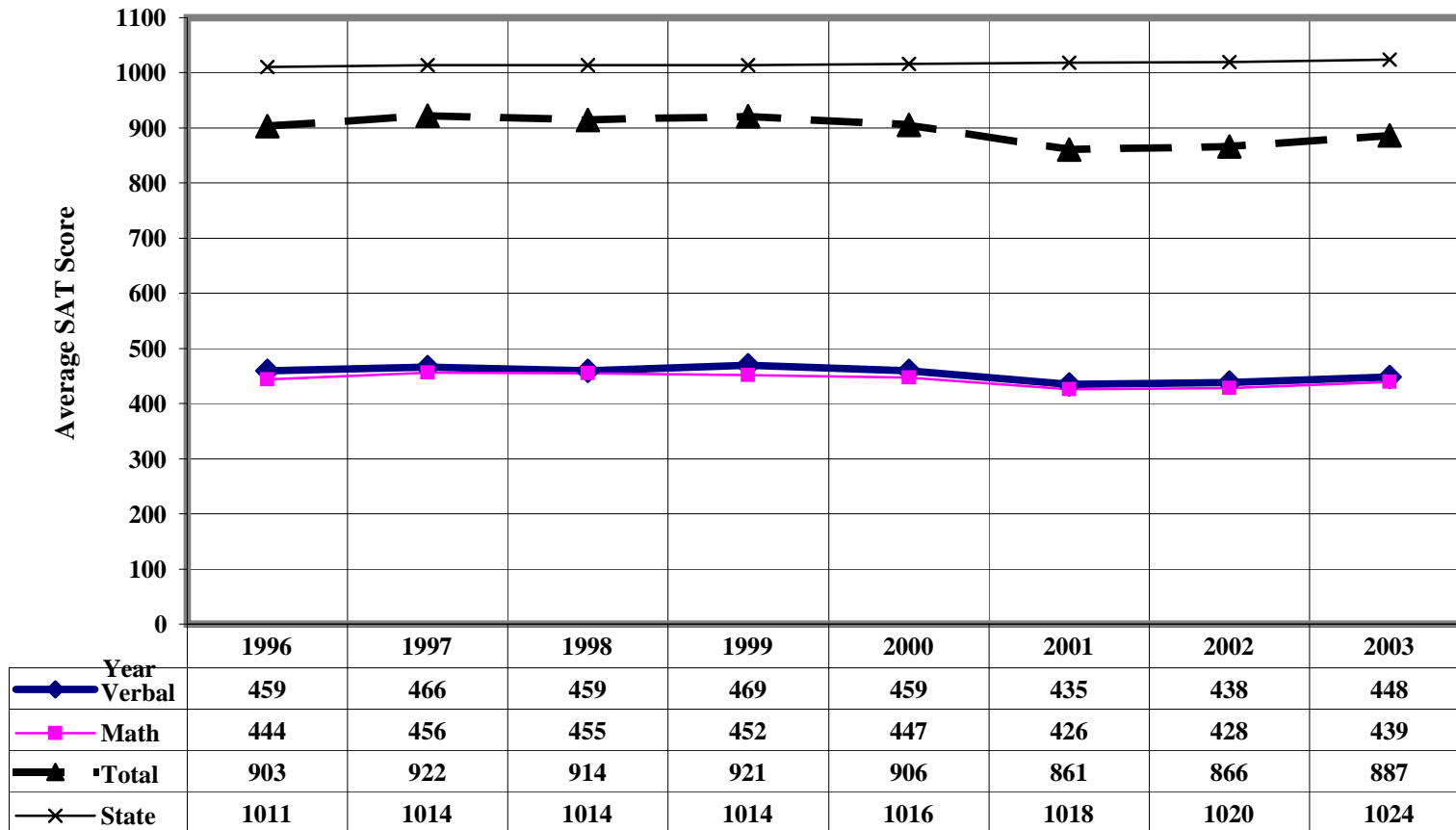
First - Time Freshmen

Mean Math Scores					Mean Verbal Scores				
Class	National Average	Maryland Average	Bowie State University	PG Schools	Class	National Average	Maryland Average	Bowie State University	PG Schools
1982	467	464	331	449	1982	426	425	297	403
1983	468	466	327	448	1983	425	427	292	400
1984	471	468	335	444	1984	426	429	301	402
1985	475	475	332	434	1985	431	435	307	399
1986	475	475	333	432	1986	431	436	308	394
1987	476	477	342	429	1987	430	437	316	391
1988	476	475	363	433	1988	428	433	343	388
1989	476	480	374	426	1989	427	434	348	383
1990	476	478	382	426	1990	424	430	348	379
1991	474	475	383	421	1991	422	429	351	383
1992	476	476	376	417	1992	423	431	355	378
1993	478	478	384	413	1993	424	431	357	375
1994	479	479	404	413	1994	423	429	370	375
1995	482	479	396	412	1995	428	430	376	373
1996	508	504	444	441	1996	505	507	459	448
1997	511	507	456	443	1997	505	507	466	452
1998	512	508	455	442	1998	505	506	459	446
1999	511	507	452	440	1999	505	507	469	449
2000	514	509	447	439	2000	505	507	459	447
2001	514	510	434	438	2001	506	508	447	448
2002	516	513	446	418	2002	504	507	455	426
2003	519	515	439	441	2003	507	509	448	446

BOWIE STATE UNIVERSITY

Average SAT Scores of First-Time Freshmen

Fall 1995 Through Fall 2002



BOWIE STATE UNIVERSITY

Headcount Enrollment

Annualized Headcount

Student Level	FY 1996	FY 1997	FY 1998	FY 1999	FY 2000	FY 2001	FY 2002	FY 2003
Undergraduate	3,295	3,084	3,085	3,113	3,019	3,281	3,553	3,755
Graduate	1,824	1,953	1,986	1,833	1,633	1,644	1,581	1,393
Total	5,119	5,037	5,071	4,946	4,652	4,925	5,134	5,148
% Change	7%	-2%	1%	-2%	-8%	0%	10%	5%

Fall Headcount

Student Level	Fall 1996	Fall 1997	Fall 1998	Fall 1999	Fall 2000	Fall 2001	Fall 2002	Fall 2003
Undergraduate	3,110	3,157	3,154	3,114	3,109	3,542	3,673	3,988
Graduate	1,957	2,010	1,870	1,656	1,591	1,639	1,584	1,466
Total	5,067	5,167	5,024	4,770	4,700	5,181	5,257	5,454
% Change	2%	2%	-3%	-5%	-6%	9%	12%	5%

BOWIE STATE UNIVERSITY

Fall Headcount by Department and Level

Department	Undergraduate		Graduate		Total		Percent Total	
	2002	2003	2002	2003	2002	2003	2002	2003
Behavioral Sciences &								
Human Services	324	234	107	427	431	661	8%	12%
Business, Economics, & Public Administration	772	918	316	345	1088	1263	21%	23%
Communications	287	319	53	50	340	369	6%	7%
Computer Science	353	455	45	35	398	490	8%	9%
Education	302	277	599	463	901	740	17%	14%
English & Modern Languages	63	86	13	18	76	104	1%	2%
Fine & Performing Arts	71	124	0	0	71	124	1%	2%
History and Government	102	102	0	0	102	102	2%	2%
Natural Sciences	189	220	0	0	189	220	4%	4%
Mathematics	62	76	13	11	75	87	1%	2%
Nursing	225	393	51	51	276	444	5%	8%
Psychology	255	301	216	0	471	301	9%	6%
Social Work	70	89	0	0	70	89	1%	2%
Technology *	226	55	0	0	226	55	4%	1%
Undeclared Majors	372	265	171	140	543	405	10%	7%
Total	3673	3914	1584	1540	5257	5454	100%	100%

*Interdisciplinary Studies

BOWIE STATE UNIVERSITY
Headcount by Hegis/Major and Level
Fall Semester

Hegis		Undergraduate	1997	1998	1999	2000	2001	2002	2003
0831	00	Art Education	6	3	1	0	0	0	0
0401	00	Biology	147	148	150	145	166	189	216
0506	01	Business Administration	782	731	744	707	746	772	880
0605	00	Communications Media	183	186	206	208	250	283	294
0701	00	Computer Science	239	293	364	359	339	353	217
0799	03	Computer Technology	0	0	0	0		82	235
0823	00	Early Childhood Education	101	87	79	89	97	96	99
0802	00	Elementary Education	218	191	201	204	187	201	194
1501	00	English	53	51	55	39	63	63	85
1001	00	Fine Arts	37	55	55	57	68	71	116
2205	00	History	47	53	52	52	67	92	98
2210	00	International Studies	6	5	1	0	1	0	0
0602	00	Journalism	22	16	5	2	3	4	1
1701	00	Mathematics	73	66	66	69	69	62	76
0832	00	Music Education	19	11	9	10	2	2	0
1203	00	Nursing	143	138	121	104	135	225	393
4999	00	Pedology	0	0	0	23	49	78	99
0835	01	Physical Education	4	0	0	0	0	0	0
2207	00	Political Science	51	43	38	26	30	10	1
2001	01	Psychology	204	201	173	183	228	255	301
2102	00	Public Administration	1	1	0	1	0	0	0
0834	00	Science Education	2	2	1	2	2	3	1
2104	00	Social Work	144	116	96	76	72	70	89
2208	02	Sociology	253	240	220	198	220	246	273
4999	06	Technology *	42	90	82	160	265	226	55
1007	00	Theatre Arts	1	0	0	0	0	0	0
9099		Undeclared Majors	379	427	395	395	483	290	265
		Total	3,157	3,154	3,114	3,109	3,542	3,673	3,988
Hegis		Graduate	1997	1998	1999	2000	2001	2002	2003
0506	01	Business Administration	0	0	0	0	0	89	140
0506	02	Administrative Management	253	218	151	145	144	62	22
0701	00	Computer Science	82	78	54	47	62	45	35
2004	01	Counseling Psychology	336	272	196	193	208	224	195
0827	01	Educational Leadership (Ed.D.) †	0	0	0	43	60	71	63
0827	00	Elem./Sec. School Administration	131	117	110	92	91	71	71
0802	00	Elementary Education	42	38	18	15	20	23	19
1501	00	English**	5	9	7	4	10	13	17
0826	01	Guidance/Counseling	281	234	182	158	158	154	135
2004	03	Human Resource Development	107	98	77	90	97	107	96
0699	02	Organizational Communications	76	62	48	52	52	53	51
0702	00	Management Information Systems	193	140	129	140	157	120	91
1703	01	Mathematics (Applied)	3	7	10	8	9	13	11
1203	00	Nursing	84	81	69	63	56	51	51
2102	00	Public Administration	0	0	0	0	0	46	89
0830	00	Reading Education	51	61	73	69	85	90	74
0803	01	Secondary Education	135	27	23	20	25	14	9
0808	00	Special Education	83	75	63	71	80	81	59
0803	12	Teaching (MAT) **	-	92	67	72	92	95	98
9099		Undeclared Majors	148	261	379	309	233	162	140
		Total	2,010	1,870	1,656	1,591	1,639	1,584	1,466

* Interdisciplinary Studies

** Program started in Fall 1997

BOWIE STATE UNIVERSITY

Undegraduate Headcount by Hegis/Program and Race

Fall 2002

Fall 2003

Hegis		Program	B	NA	A/PI	H	W	N-RA	UNKN	Total	B	NA	A/PI	H	W	N-RA	UNKN	Total
0831	00	Art Education	0	0	0	0	0	0	0	0	0	0	0	0	0	0	0	0
0401	00	Biology	159	0	5	4	13	5	3	189	191	0	4	4	10	5	2	216
0506	01	Business Administration	698	1	12	10	36	11	4	772	805	3	13	14	32	11	2	880
0605	00	Communications Media	275	0	3	1	3	1	0	283	285	0	2	3	4	0	0	294
0701	00	Computer Science	238	0	8	4	6	15	0	271	190	0	4	3	7	11	2	217
79903	01	Computer Technology**	75	0	2	0	3	2	0	82	218	0	6	3	5	2	0	234
0823	00	Early Childhood Education	82	0	1	0	11	1	1	96	78	1	0	0	18	0	2	99
0802	00	Elementary Education	155	0	2	6	38	0	0	201	145	1	3	7	39	0	0	195
1501	00	English	53	0	0	1	8	1	0	63	69	0	0	0	13	2	1	85
1001	00	Fine Arts	67	0	0	0	3	0	1	71	106	1	2	1	5	0	1	116
2205	00	History	80	1	0	3	7	0	1	92	83	0	0	5	9	0	1	98
22100	00	International Studies	0	0	0	0	0	0	0	0	0	0	0	0	0	0	0	0
0602	00	Journalism	4	0	0	0	0	0	0	4	1	0	0	0	0	0	0	1
1701	00	Mathematics	55	1	1	1	3	0	1	62	67	2	3	1	1	2	0	76
0832	00	Music Education	1	0	0	0	1	0	0	2	0	0	0	0	0	0	0	0
1203	00	Nursing	199	2	5	1	12	4	2	225	357	2	8	6	12	5	3	393
4999	00	Pedalogy	75	0	0	0	3	0	0	78	94	0	1	1	2	0	1	99
2207	00	Political Science	9	0	0	0	0	0	1	10	1	0	0	0	0	0	0	1
2001	01	Psychology	234	0	0	3	12	3	3	255	280	1	2	2	11	1	4	301
2102	00	Public Administration	0	0	0	0	0	0	0	0	0	0	0	0	0	0	0	0
0834	00	Science Education	2	0	1	0	0	0	0	3	0	0	1	0	0	0	0	1
2104	00	Social Work	62	0	0	2	6	0	0	70	80	0	0	0	9	0	0	89
2208	02	Sociology	229	0	0	1	15	1	0	246	256	0	0	2	14	0	1	273
4999	06	Technology*	190	1	6	5	21	2	1	226	38	0	1	2	11	1	2	55
9099	00	Undeclared	318	2	5	6	34	1	6	372	223	1	3	3	25	1	9	265
Totals			3260	8	51	48	235	47	24	3673	3567	12	53	57	227	41	31	3988

Note: B----African American H-----Hispanic **-----CTEC Added 2001
 NA-----Native American W-----White A/PI---- Asian/Pacific Islander
 *-----Interdisciplinary Studies N-RA---Non-Resident Alien

BOWIE STATE UNIVERSITY

Graduate Headcount by Hegis/Program and Race

Fall 2002											Fall 2003							
Hegis		Program	AfrA	NA	A/PI	H	W	N-RA	UNKN	Total	AfrA	NA	A/PI	H	W	N-RA	UNKN	Total
0506	02	Administrative Management	57	0	1	0	3	0	1	62	21	0	0	0	1	0	0	22
1703	01	Applied Mathematics*	10	0	1	0	1	1	0	13	8	0	0	0	3	0	0	11
0506	01	Business Administration	81	0	1	2	1	3	1	0	130	0	1	2	0	4	3	140
0701	00	Computer Science	17	0	15	0	4	8	1	45	14	0	11	2	1	6	1	35
2004	01	Counseling Psychology	179	1	2	3	39	0	0	224	154	0	2	3	35	0	1	195
2004	03	Human Resource Development	100	0	0	0	6	0	1	107	89	0	0	0	5	0	2	96
0827	01	Educational Leadership	57	0	2	1	11	0	0	71	53	0	2	0	8	0	0	63
0827	00	Elem./Sec. School Administration	48	1	1	0	21	0	0	71	51	0	1	0	18	0	1	71
0802	00	Elementary Education	12	0	0	0	11	0		23	10	0	0	0	9	0	0	19
1501	00	English*	8	0	2	0	3	0	0	13	13	0	2	0	2	0	0	17
0826	01	Guidance Counseling	117	1	0	0	35	0	1	154	98	1	2	1	30	0	3	135
0699	02	Organizational Communications	51	0	0	1	0	0	1	53	47	0	1	1	1	1	0	51
0702	00	Management Information Systems	106	1	4	1	2	4	2	120	82	0	3	1	2	1	2	91
1203	00	Nursing	29	1	4	3	14	0	0	51	34	0	3	1	13	0	0	51
2102	00	Public Administration	43	0	0	0	3	0	0	46	81	0	1	1	4	1	1	89
0830	00	Reading Education	39	0	0	0	51	0	0	90	37	0	1	1	35	0	0	74
0803	01	Secondary Education	7	0	0	0	7	0	0	14	6	0	0	0	3	0	0	9
0808	00	Special Education	55	1	1	3	20	1	0	81	46	1	1	1	9	1	0	59
0803	12	Teaching (MAT)**	65	0	0	3	27	0	0	95	67	0	1	0	25	0	1	94
9099	00	Undeclared Majors	99	0	1	3	56	0	3	162	78	0	3	4	56	0	3	144
Totals			1180	6	35	20	315	17	11	1584	1119	2	35	18	260	14	18	1466

* Program started in Fall 1997

** Master of Arts in Teaching

Note: AfrA----African American
 NA-----Native American
 A/PI-----Asian

H-----Hispanic
 W-----White
 N-RA---Non-Resident Alien

BOWIE STATE UNIVERSITY

Headcount by Attendance Status

Total Enrollment							
Attendance Status	Fall 1997	Fall 1998	Fall 1999	Fall 2000	Fall 2001	Fall 2002	Fall 2003
Full-Time	2,501	2,510	2,489	2,485	2,935	3,124	3,439
Part-Time	2,666	2,514	2,281	2,215	2,246	2,133	2,015
Total	5,167	5,024	4,770	4,700	5,181	5,257	5,454
Percent Full-Time	48%	50%	52%	53%	57%	59%	63%
Percent Part-Time	52%	50%	48%	47%	43%	41%	37%

Undergraduate Enrollment							
Attendance Status	Fall 1997	Fall 1998	Fall 1999	Fall 2000	Fall 2001	Fall 2002	Fall 2003
FT Undergraduate	2,154	2,191	2,214	2,225	2,635	2,815	3,122
PT Undergraduate	1,003	963	900	884	907	858	866
Total	3,157	3,154	3,114	3,109	3,542	3,673	3,988
% Change	-3%	-3%	-1%	-1%	14%	18%	13%

Graduate Enrollment							
Attendance Status	Fall 1997	Fall 1998	Fall 1999	Fall 2000	Fall 2001	Fall 2002	Fall 2003
FT Graduate	347	319	275	260	300	309	317
PT Graduate	1,663	1,551	1,381	1,331	1,339	1,275	1,149
Total	2,010	1,870	1,656	1,591	1,639	1,584	1,466
% Change	21%	13%	-18%	-15%	-1%	-0.44%	-10.56%

BOWIE STATE UNIVERSITY

First-Time, Full-Time Undergraduate Enrollment by Race

Race	Fall 1997	Fall 1998	Fall 1999	Fall 2000	Fall 2001	Fall 2002	Fall 2003
Black	327	380	302	339	565	524	714
Non-Black	33	39	41	24	34	52	52
Total	360	419	343	363	599	576	766
% Black	91%	91%	88%	93%	94%	91%	93%
% Non-Black	9%	9%	12%	7%	6%	9%	7%

First-Time Undergraduate Enrollment by Race and Attendance Status

Race	Fall 1997		Fall 1998		Fall 1999		Fall 2000		Fall 2001		Fall 2002		Fall 2002	
	FT	PT	FT	PT	FT	PT	FT	PT	FT	PT	FT	PT	FT	PT
Black	327	56	380	57	302	31	339	35	565	77	524	54	714	73
Native American	3	0	2	1	2	1	1	0	0	1	3	0	3	0
Asian	8	4	7	7	6	2	4	2	8	0	9	1	11	1
Hispanic	2	2	5	1	9	3	7	0	9	3	4	2	13	1
White	19	14	23	21	23	10	10	12	12	26	16	15	18	10
International	1	2	2	0	1	0	2	0	4	0	7	0	7	0
Sub-total	360	78	419	87	343	47	363	49	598	107	563	72	766	85
Total	438		506		390		412		705		635		851	
Percent	82%	18%	83%	17%	88%	12%	88%	12%	85%	15%	89%	11%	90%	10%

BOWIE STATE UNIVERSITY

First-Time, Full-Time Graduate Enrollment by Race

Race	Fall 1997	Fall 1998	Fall 1999	Fall 2000	Fall 2001	Fall 2002	Fall 2003
Black	41	46	45	62	71	69	53
Non-Black	30	20	13	21	23	14	11
Total	71	66	58	83	94	83	64
% Black	58%	70%	78%	75%	76%	83%	83%
% Non-Black	42%	30%	22%	25%	24%	17%	17%

First-Time Graduate Enrollment by Race and Attendance Status

Race	Fall 1997		Fall 1998		Fall 1999		Fall 2000		Fall 2001		Fall 2002		Fall 2003	
	FT	PT	FT	PT	FT	PT	FT	PT	FT	PT	FT	PT	FT	PT
Black	41	256	46	212	45	185	62	224	72	226	69	244	53	169
Native American	0	2	0	0	1	1	0	1	0	0	1	1	0	0
Asian	7	4	2	6	3	8	9	7	8	6	1	2	1	2
Hispanic	1	5	1	2	2	8	0	5	4	4	2	4	8	3
White	15	108	10	132	7	120	9	64	8	112	4	72	2	51
International	7	2	7	4	0	0	3	1	5	1	2	3	0	6
Sub-total	71	377	66	356	58	322	83	302	97	349	79	326	64	231
Total	448		422		380		385		446		405		295	
Percent	16%	84%	16%	84%	15%	85%	22%	78%	22%	78%	20%	80%	22%	78%

BOWIE STATE UNIVERSITY

Headcount by Race and Level

All Students

Race	Fall 1997	Fall 1998	Fall 1999	Fall 2000	Fall 2001	Fall 2002	Fall 2002
Black	3,981	3,914	3,769	3,806	4,276	4,440	4,686
White	890	846	767	665	651	550	483
Others	296	264	234	229	254	267	285
Total	5,167	5,024	4,770	4,700	5,181	5,257	5,454
% Black	77%	78%	79%	81%	83%	84%	86%
% White	17%	17%	16%	14%	13%	10%	9%
% Others	6%	5%	5%	5%	5%	5%	5%

Undergraduate

Race	Fall 1997	Fall 1998	Fall 1999	Fall 2000	Fall 2001	Fall 2002	Fall 2003
Black	2,651	2,683	2,682	2,701	3,123	3,260	3,567
White	365	337	300	269	264	235	227
Others	141	134	132	139	155	178	194
Total	3,157	3,154	3,114	3,109	3,542	3,673	3,988
% Black	84%	85%	86%	87%	88%	89%	89%
% White	12%	11%	10%	9%	7%	6%	6%
% Others	4%	4%	4%	4%	4%	5%	5%

Graduate

Race	Fall 1997	Fall 1998	Fall 1999	Fall 2000	Fall 2001	Fall 2002	Fall 2003
Black	1,330	1,231	1,087	1,105	1,153	1,180	1,119
White	525	509	467	396	387	315	256
Others	155	130	102	90	99	89	91
Total	2,010	1,870	1,656	1,591	1,639	1,584	1,466
% Black	66%	66%	66%	69%	70%	74%	76%
% White	26%	27%	28%	25%	24%	20%	17%
% Others	8%	7%	6%	6%	6%	6%	6%

BOWIE STATE UNIVERSITY

Undergraduate Headcount by Race, Level and Attendance Status

Full-Time Undergraduates

Race	Fall 2000		Fall 2001		Fall 2002		Fall 2003	
	#	% Total	#	% Total	#	% Total	#	% Total
Black	1,993	89.57%	2,380	90.32%	2,540	90.23%	2,828	90.58%
Native American	10	0.45%	7	0.27%	6	0.21%	8	0.26%
Asian	34	1.53%	34	1.29%	33	1.17%	40	1.28%
Hispanic	28	1.26%	33	1.25%	31	1.10%	39	1.25%
White	138	6.20%	146	5.54%	146	5.19%	148	4.74%
International	22	0.99%	31	1.18%	38	1.35%	34	1.09%
Unknown	0	0.00%	4	0.15%	21	0.75%	25	0.80%
Total	2,225	100%	2,635	100%	2,815	100%	3,122	100%

Part-Time Undergraduates

Race	Fall 2000		Fall 2001		Fall 2002		Fall 2003	
	#	% Total	#	% Total	#	% Total	#	% Total
Black	708	80.09%	743	81.92%	720	83.92%	739	85.33%
Native American	4	0.45%	5	0.55%	2	0.23%	4	0.46%
Asian	17	1.92%	14	1.54%	18	2.10%	13	1.50%
Hispanic	17	1.92%	18	1.98%	17	1.98%	18	2.08%
White	131	14.82%	118	13.01%	89	10.37%	79	9.12%
International	7	0.79%	4	0.44%	9	1.05%	7	0.81%
Unknown	0	0.00%	5	0.55%	3	0.35%	6	0.69%
Total	884	100%	907	100%	858	100%	866	100%

Total Undergraduates

Race	Fall 2000		Fall 2001		Fall 2002		Fall 2003	
	#	% Total	#	% Total	#	% Total	#	% Total
Black	2,701	86.88%	3,123	88.17%	3,260	88.76%	3,567	89.44%
Native American	14	0.45%	12	0.34%	8	0.22%	12	0.30%
Asian	51	1.64%	48	1.36%	51	1.39%	53	1.33%
Hispanic	45	1.45%	51	1.44%	48	1.31%	57	1.43%
White	269	8.65%	264	7.45%	235	6.40%	227	5.69%
International	29	0.93%	35	0.99%	47	1.28%	41	1.03%
Unknown	0	0.00%	9	0.25%	24	0.65%	31	0.78%
Total	3,109	100%	3,542	100%	3,673	100%	3,988	100%

BOWIE STATE UNIVERSITY

Graduate Headcount by Race, Level and Attendance Status

Full-Time Graduate Students

Race	Fall 2000		Fall 2001		Fall 2002		Fall 2003	
	#	% Total	#	% Total	#	% Total	#	% Total
Black	195	75.00%	231	77.00%	241	77.99%	250	78.86%
Native American	2	0.77%	3	1.00%	2	0.65%	1	0.32%
Asian	20	7.69%	21	7.00%	12	3.88%	9	2.84%
Hispanic	3	1.15%	2	0.67%	4	1.29%	7	2.21%
White	32	12.31%	29	9.67%	33	10.68%	38	11.99%
International	8	3.08%	11	3.67%	10	3.24%	7	2.21%
Unknown	0	0.00%	3	1.00%	7	2.27%	5	1.58%
Total	260	100%	300	100%	309	100%	317	100%

Part-Time Graduate Students

Race	Fall 2000		Fall 2001		Fall 2002		Fall 2003	
	#	% Total	#	% Total	#	% Total	#	% Total
Black	910	68.37%	922	68.86%	939	73.65%	869	75.63%
Native American	2	0.15%	5	0.37%	4	0.31%	1	0.09%
Asian	25	1.88%	29	2.17%	23	1.80%	26	2.26%
Hispanic	20	1.50%	17	1.27%	16	1.25%	15	1.31%
White	364	27.35%	358	26.74%	282	22.12%	218	18.97%
International	10	0.75%	4	0.30%	7	0.55%	7	0.61%
Unknown	0	0.00%	4	0.30%	4	0.31%	13	1.13%
Total	1,331	100%	1,339	100%	1,275	100%	1,149	100%

Total Graduate Students

Race	Fall 2000		Fall 2001		Fall 2002		Fall 2003	
	#	% Total	#	% Total	#	% Total	#	% Total
Black	1,105	69.45%	1,153	70.35%	1,180	74.49%	1,119	76.33%
Native American	4	0.25%	8	0.49%	6	0.38%	2	0.14%
Asian	45	2.83%	50	3.05%	35	2.21%	35	2.39%
Hispanic	23	1.45%	19	1.16%	20	1.26%	22	1.50%
White	396	24.89%	387	23.61%	315	19.89%	256	17.46%
International	18	1.13%	15	0.92%	17	1.07%	14	0.95%
Unknown	0	0.00%	7	0.43%	11	0.69%	18	1.23%
Total	1,591	100%	1,639	100%	1,584	100%	1,466	100%

BOWIE STATE UNIVERSITY

Total Student Headcount by Race and Attendance Status

Total Full-Time Students

Race	Fall 1999		Fall 2000		Fall 2001		Fall 2002		Fall 2003	
	#	% Total	#	% Total	#	% Total	#	% Total	#	% Total
Black	2,163	86.90%	2,188	88.05%	2,611	88.96%	2,781	89.02%	3,078	89.50%
Native American	10	0.40%	12	0.48%	10	0.34%	8	0.26%	9	0.26%
Asian	47	1.89%	54	2.17%	55	1.87%	45	1.44%	49	1.42%
Hispanic	37	1.49%	31	1.25%	35	1.19%	35	1.12%	46	1.34%
White	203	8.16%	170	6.84%	175	5.96%	179	5.73%	186	5.41%
International	29	1.17%	30	1.21%	42	1.43%	48	1.54%	41	1.19%
Unknown	0	0.00%	0	0.00%	7	0.24%	28	0.90%	30	0.87%
Total	2,489	100%	2,485	100%	2,935	100%	3,124	100%	3,439	100%

Total Part-Time Students

Race	Fall 1999		Fall 2000		Fall 2001		Fall 2002		Fall 2003	
	#	% Total	#	% Total	#	% Total	#	% Total	#	% Total
Black	1606	70.41%	1618	73.05%	1665	74.13%	1659	77.78%	1608	79.80%
Native American	10	0.44%	6	0.27%	10	0.45%	6	0.28%	5	0.25%
Asian	45	1.97%	42	1.90%	43	1.91%	41	1.92%	39	1.94%
Hispanic	38	1.67%	37	1.67%	35	1.56%	33	1.55%	33	1.64%
White	564	24.73%	495	22.35%	476	21.19%	371	17.39%	297	14.74%
International	18	0.79%	17	0.77%	8	0.36%	16	0.75%	14	0.69%
Unknown	0	0.00%	0	0.00%	9	0.40%	7	0.33%	19	0.94%
Total	2,281	100%	2,215	100%	2,246	100%	2,133	100%	2,015	100%

Total Students

Race	Fall 1999		Fall 2000		Fall 2001		Fall 2002		Fall 2003	
	#	% Total	#	% Total	#	% Total	#	% Total	#	% Total
Black	3,769	79.01%	3,806	80.98%	4,276	82.53%	4,440	84.46%	4,686	85.92%
Native American	20	0.42%	18	0.38%	20	0.39%	14	0.27%	14	0.26%
Asian	92	1.93%	96	2.04%	98	1.89%	86	1.64%	88	1.61%
Hispanic	75	1.57%	68	1.45%	70	1.35%	68	1.29%	79	1.45%
White	767	16.08%	665	14.15%	651	12.57%	550	10.46%	483	8.86%
International	47	0.99%	47	1.00%	50	0.97%	64	1.22%	55	1.01%
Unknown	0	0.00%	0	0.00%	16	0.31%	35	0.67%	49	0.90%
Total	4,770	100%	4,700	100%	5,181	100%	5,257	100%	5,454	100%

BOWIE STATE UNIVERSITY
Headcount by Gender and Age

Attendance Status	Fall 2000				Fall 2001				Fall 2002				Fall 2003			
	Male		Female		Male		Female		Male		Female		Male		Female	
	#	AVG Age	#	AVG Age	#	AVG Age	#	AVG Age	#	AVG Age	#	AVG Age	#	AVG Age	#	AVG Age
Full-Time Undergraduates	943	21	1,282	21	1,079	21	1,556	23	1,134	23	1,681	24	1,186	22	1,936	22
Part-Time Undergraduates	290	28	594	34	266	31	641	34	273	32	585	35	286	31	578	34
Full-Time Graduates	73	30	187	29	91	32	209	32	88	32	221	33	89	30	228	32
Part-Time Graduates	363	33	968	34	344	36	995	33	331	37	944	36	288	36	863	35
	1,669		3,031		1,780		3,401		1,826		3,431		1,849		3,605	
	4700				5181				5257				5454			

Gender	Fall 1996	Fall 1997	Fall 1998	Fall 1999	Fall 2000	Fall 2001	Fall 2002	Fall 2003
Male	1,696	1,732	1,711	1,641	1,669	1,780	1,826	1,849
Female	3,371	3,435	3,313	3,129	3,031	3,401	3,431	3,605
Total	5,067	5,167	5,024	4,770	4,700	5,181	5,257	5,454
% Male	33%	34%	34%	34%	36%	34%	35%	34%
% Female	67%	66%	66%	66%	64%	66%	65%	66%

Age Range	Fall 1996	Fall 1997	Fall 1998	Fall 1999	Fall 2000	Fall 2001	Fall 2002	Fall 2003
16 To 24 Years	1,841	2,116	2,107	2,136	2,143	2,540	2,491	2,903
25 Years/Older	3,226	3,051	2,917	2,634	2,557	2,641	2,766	2,551
Total	5,067	5,167	5,024	4,770	4,700	5,181	5,257	5,454
% 16 To 24 Yrs	36.3%	41.0%	41.9%	44.8%	45.6%	49.0%	47.4%	53.2%
% 25 Yrs/Older	63.7%	59.0%	58.1%	55.2%	54.4%	51.0%	52.6%	46.8%

BOWIE STATE UNIVERSITY

Headcount by Residence

Geographic Origin	Fall 1998		Fall 1999		Fall 2000		Fall 2001		Fall 2002		Fall 2003	
	#	(Pct.)	#	(Pct.)	#	(Pct.)	#	(Pct.)	#	(Pct.)	#	(Pct.)
Out-of-State												
Unknown	10	0.2%	4	0.1%	6	0.1%	15	0.3%	6	0.1%	10	0.2%
International	103	2.1%	89	1.9%	93	2.0%	98	1.9%	92	1.8%	51	0.9%
District of Columbia	124	2.5%	109	2.3%	117	2.5%	159	3.1%	142	2.7%	165	3.0%
New Jersey	20	0.4%	19	0.4%	14	0.3%	24	0.5%	2	0.0%	31	0.6%
New York	36	0.7%	20	0.4%	27	0.6%	45	0.9%	6	0.1%	43	0.8%
Pennsylvania	33	0.7%	15	0.3%	18	0.4%	15	0.3%	0	0.0%	15	0.3%
Virginia	51	1.0%	42	0.9%	43	0.9%	44	0.8%	8	0.2%	48	0.9%
Other States	92	1.8%	77	1.6%	87	1.9%	99	1.9%	246	4.7%	194	3.6%
Out-of-State Total	469	9.3%	375	7.9%	405	8.6%	499	9.6%	502	9.5%	557	10.2%
In-State												
Unknown County	0	0.0%	0	0.0%	0	0.0%	1	0.0%	0	0.0%	1	0.0%
Allegany	1	0.0%	13	0.3%	16	0.3%	22	0.4%	16	0.3%	8	0.1%
Anne Arundel	408	8.1%	359	7.5%	330	7.0%	336	6.5%	348	6.6%	333	6.1%
Baltimore	150	3.0%	138	2.9%	121	2.6%	140	2.7%	152	2.9%	164	3.0%
Calvert	86	1.7%	72	1.5%	64	1.4%	66	1.3%	71	1.4%	73	1.3%
Caroline	5	0.1%	6	0.1%	5	0.1%	5	0.1%	5	0.1%	4	0.1%
Carroll	10	0.2%	6	0.1%	3	0.1%	2	0.0%	2	0.0%	3	0.1%
Cecil	1	0.0%	1	0.0%	0	0.0%	0	0.0%	2	0.0%	2	0.0%
Charles	88	1.8%	76	1.6%	77	1.6%	95	1.8%	91	1.7%	99	1.8%
Dorchester	10	0.2%	11	0.2%	9	0.2%	6	0.1%	4	0.1%	13	0.2%
Frederick	10	0.2%	9	0.2%	10	0.2%	11	0.2%	10	0.2%	13	0.2%
Garrett	1	0.0%	4	0.1%	6	0.1%	4	0.1%	3	0.1%	3	0.1%
Harford	8	0.2%	7	0.1%	9	0.2%	10	0.2%	9	0.2%	13	0.2%
Howard	93	1.9%	83	1.7%	79	1.7%	79	1.5%	95	1.8%	91	1.7%
Kent	0	0.0%	2	0.0%	2	0.0%	2	0.0%	1	0.0%	0	0.0%
Montgomery	414	8.2%	462	9.7%	437	9.3%	435	8.4%	398	7.6%	397	7.3%
Prince George's	3,064	61.0%	2,953	61.9%	2,954	62.9%	3,246	62.7%	3,292	62.6%	3,357	61.6%
Queen Anne's	21	0.4%	20	0.4%	18	0.4%	18	0.3%	17	0.3%	15	0.3%
St. Mary's	37	0.7%	28	0.6%	24	0.5%	29	0.6%	27	0.5%	31	0.6%
Somerset	3	0.1%	2	0.0%	2	0.0%	3	0.1%	3	0.1%	6	0.1%
Talbot	3	0.1%	3	0.1%	5	0.1%	4	0.1%	3	0.1%	4	0.1%
Washington	0	0.0%	2	0.0%	2	0.0%	2	0.0%	1	0.0%	0	0.0%
Wicomico	14	0.3%	15	0.3%	11	0.2%	18	0.3%	24	0.5%	19	0.3%
Worcester	3	0.1%	3	0.1%	1	0.0%	6	0.1%	4	0.1%	9	0.2%
Baltimore City	125	2.5%	120	2.5%	110	2.3%	142	2.7%	177	3.4%	239	4.4%
In-State Total	4,555	90.7%	4,395	92.1%	4,295	91.4%	4,682	90.4%	4,755	90.5%	4,897	89.8%
Total	5,024	100%	4,770	100%	4,700	100%	5,181	100%	5,257	100%	5,454	100%

BOWIE STATE UNIVERSITY

Full-Time Equivalent Student (FTE)

Academic Year	FTES	FTEF	FTES TO FTEF
AY1995	3277	181	18.10
AY 1996	3448	198	17.41
AY1997	3310	195	16.97
AY 1998	3335	215	15.51
AY1999	3326	227	14.65
AY 2000	3208	231	13.89
AY 2001	3681	217	16.96
AY 2002	3841	244	15.74
AY 2003	4082	259	15.76

Annualized Student Enrollment FTE

Student Level	FY 1998	FY 1999	FY 2000	FY2001	FY 2002	FY 2003
Undergraduate FTE	2,466	2,540	2,495	2,525	2,593	3,299
Graduate FTE	869	786	713	699	721	670
Total	3,335	3,326	3,208	3,224	3,314	3,969
Change from Previous Year		0%	-4%	0%	3%	20%

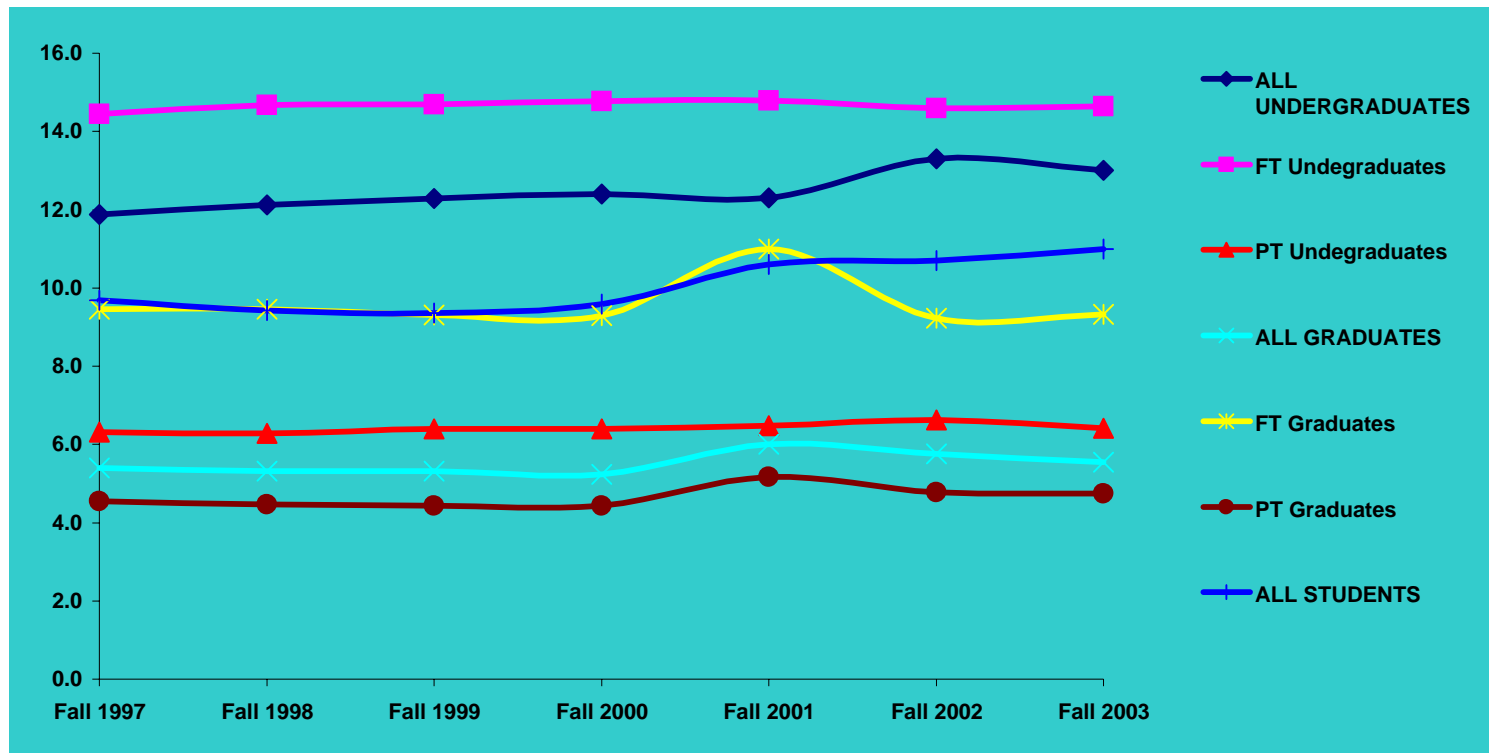
Fall Student Enrollment FTE

Student Level	Fall 1998	Fall 1999	Fall 2000	Fall 2001	Fall 2002	Fall 2003
Undergraduate FTE	2,573	2,568	2,593	3,042	3,142	3,382
Graduate FTE	789	714	665	826	761	679
Total	3,362	3,282	3,258	3,868	3,903	4,061
Change from Previous Year		-2%	-1%	19%	1%	4%

BOWIE STATE UNIVERSITY

Average Credit Load by Level

Status/Level	Fall 1997	Fall 1998	Fall 1999	Fall 2000	Fall 2001	Fall 2002	Fall 2003
ALL UNDERGRADUATES	11.9	12.1	12.3	12.4	12.3	13.3	13.0
FT Undegraduates	14.5	14.7	14.7	14.8	14.8	14.6	14.6
PT Undegraduates	6.3	6.3	6.4	6.4	6.5	6.6	6.4
ALL GRADUATES	5.4	5.3	5.3	5.2	6.0	5.8	5.6
FT Graduates	9.5	9.5	9.3	9.3	11.0	9.2	9.3
PT Graduates	4.6	4.5	4.4	4.4	5.2	4.8	4.7
ALL STUDENTS	9.7	9.4	9.4	9.6	10.6	10.7	11.0



BOWIE STATE UNIVERSITY

Credit Hour by Discipline - Fall 2003

Hegis	Discipline	Lower	Upper	Undergraduate Total	Graduate	Total
0501	Accounting	603	429	1032	153	1,185
2202	Anthropology	417	78	495	0	495
1001	Art	231	846	1077	0	1,077
0401	Biology	1689	629	2318	0	2,318
0506	Business Administration	1326	1545	2871	333	3,204
1905	Chemistry	761	27	788	0	788
0605	Communications	27	1056	1083	0	1,083
0701	Computer Science	1877	392	2269	231	2,500
2299	Computer Technology	702	615	1317	0	1,317
2209	Criminal Justice	96	378	474	0	474
9530	Developmental Mathematics	3024	0	3024	0	3,024
0823	Early Childhood Education	0	170	170	0	170
2204	Economics	783	963	1746	0	1,746
0801	Education/General	465	330	795	1869	2,664
0802	Elementary Education	0	384	384	0	384
0827	Elementary & Secondary School Administr	0	0	0	252	252
1501	English	4425	1200	5625	90	5,715
1102	French	219	0	219	0	219
2206	Geography	327	0	327	0	327
0826	Guidance/Counseling	0	0	0	720	720
0837	Health Education	1521	28	1549	0	1,549
2205	History	1818	132	1950	0	1,950
2099	Human Resource Development	0	0	0	605	605
0602	Journalism	135	432	567	0	567
0597	Management	378	1137	1515	675	2,190
0702	Management Information Systems	0	0	0	684	684
1701	Mathematics	2462	132	2594	54	2,648
1801	Military Science	63	68	131	0	131
1005	Music	436	163	599	0	599
1004	Music/Applied	218	31	249	0	249
1203	Nursing	240	1188	1428	240	1,668
0699	Organizational Communications	0	0	0	246	246
9500	Freshman Seminar	2241	0	2241	0	2,241
1509	Philosophy	1113	84	1197	0	1,197
0835	Physical Education	70	0	70	0	70
1901	Physical Science	932	0	932	0	932
1902	Physics	329	27	356	0	356
2001	Psychology	1492	1518	3010	1258	4,268
2102	Public Administration	0	0	0	318	318
0803	Secondary Educator	0	65	65	0	65
2104	Social Work	237	641	878	0	878
2208	Sociology	945	1590	2535	0	2,535
1105	Spanish	537	3	540	0	540
0808	Special Education	0	174	174	414	588
1506	Speech/Linguistics	1623	171	1794	0	1,794
1007	Theatre	325	12	337	0	337
	Total Credits	34,087	16,638	50,725	8,142	58,867
	Total FTES*	2,272	1,109	3,382	679	4,060

Note: *FTES Formula for calculating Graduate Students $\text{Total Credit Hours}/12$

*FTES = Full-Time Equivalent Student

*FTES Formula for calculating Lower and Upper Undergraduate Students $\text{Total Credit Hours}/15$

BOWIE STATE UNIVERSITY

Credit Hour By discipline - Fall 2002

Hegis	Discipline	Lower	Upper	Undergraduate Total	Graduate	Total
0502	Accounting	603	510	1113	153	1,266
2202	Anthropology	381	72	453	0	453
1001	Art	237	871	1108	0	1,108
0401	Biology	1633	556	2189	0	2,189
0506	Business Administration	1137	1500	2637	231	2,868
1905	Chemistry	624	39	663	0	663
0605	Communications	0	1059	1059	0	1,059
0701	Computer Science	1746	462	2208	276	2,484
0799	Computer Technology	774	1044	1818	0	1,818
2209	Criminal Justice	189	339	528	0	528
9530	Developmental Mathematics	2598	0	2598	0	2,598
0823	Early Childhood Education	0	180	180	0	180
2204	Economics	654	1059	1713	12	1,725
0801	Education/General	544	273	817	2178	2,995
	Electives	57	0	57	0	57
0802	Elementary Education	0	347	347	0	347
0827	Elementar & Secondary School Admir	0	0	0	372	372
1501	English	3678	1110	4788	84	4,872
1102	French	213	0	213	0	213
2206	Geography	315	0	315	0	315
0826	Guidance/Counseling	0	0	0	831	831
0837	Health Education	1236	0	1236	0	1,236
2205	History	1992	231	2223	0	2,223
2004	Human Resource Development	0	0	0	791	791
4999	IDIS - Technology	370	291	661	0	661
0602	Journalism	285	408	693	0	693
0597	Management	270	1302	1572	552	2,124
0702	Management Information Systems	0	0	0	885	885
1701	Mathematics	2150	156	2306	60	2,366
1801	Military Science	52	68	120	0	120
1005	Music	355	147	502	0	502
1004	Music/Applied	287	11	298	0	298
1203	Nursing	201	504	705	271	976
0699	Organizational Communications	0	0	0	276	276
9500	Freshman Seminar	1662	0	1662	0	1,662
1509	Philosophy	1029	87	1116	0	1,116
0835	Physical Education	118	0	118	0	118
1901	Physical Science	624	0	624	0	624
1902	Physics	349	0	349	0	349
2001	Psychology	1501	1269	2770	1366	4,136
2102	Public Administration	0	0	0	228	228
0803	Secondary Education	0	49	49	0	49
2104	Social Work	174	571	745	0	745
2208	Sociology	858	1245	2103	0	2,103
1105	Spanish	507	0	507	0	507
0808	Special Education	0	174	174	561	735
1506	Speech/Linguistics	1416	189	1605	0	1,605
1007	Theatre	171	10	181	0	181
	Total Credits	30,990	16,133	47,123	9,127	56,250
	Total FTES*	2,066	1,076	3,142	761	3,902

Note: *FTES Formula for calculating Graduate Students **Total Credit Hours/12**

*FTES = Full-Time Equivalent Student

*FTES Formula for calculating Lower and Upper Undergraduate Students **Total Credit Hours/15**

BOWIE STATE UNIVERSITY

Credit Hours By Department - Fall 2003

DEPT	HEGIS	DISCIPLINE	Undergraduate			Graduate	Total Cr. Hrs.	FTES	%Total FTES
			Lower	Upper	Total				
			CREDIT HOURS						
ARTS	1001	Art	231	846	1077	0	1,077	36	
ARTS	1004	Music, Applied	218	31	249	0	249	8	
ARTS	1005	Music	436	163	599	0	599	20	
ARTS	1007	Theatre	325	12	337	0	337	11	
		ARTS TOTAL	1210	1052	2262	0	2,262	75	3.7%
BSHS	2004	Human Resource Dev.	0	0	0	605	605	25	
BSHS	2202	Anthropology	417	78	495	0	495	17	
BSHS	2208	Sociology	945	1590	2535	0	2,535	85	
BSHS	2209	Criminal Justice	96	378	474	0	474	16	
		BSHS TOTAL	1458	2046	3504	605	4,109	142	7.0%
BEPA	0502	Accounting	603	429	1032	153	1,185	41	
BEPA	0506	Business Administration	1326	1545	2871	333	3,204	110	
BEPA	0597	Management	378	1137	1515	675	2,190	79	
BEPA	0702	Management Information Sys.	0	0	0	684	684	29	
BEPA	2102	Public Administration	0	0	0	318	318	13	
BEPA	2204	Economics	783	963	1746	0	1,746	58	
		BEPA TOTAL	3090	4074	7164	2163	9,327	329	16.2%
COMM	0602	Journalism	135	432	567	0	567	19	
COMM	0605	Communications	27	1056	1083	0	1,083	36	
COMM	0699	Organizational Comm.	0	0	0	246	246	10	
COMM	1506	Speech/Linguistics	1623	171	1794	0	1,794	60	
		COMM TOTAL	1785	1659	3444	246	3,690	125	6.2%
COSC	0701	Computer Science	1877	392	2269	231	2,500	85	
	799	Computer Technology	702	615	1317	0	1,317	44	
		COSC TOTAL	2579	1007	3586	231	2,500	129	6.4%
EDPE	0801	Education	465	330	795	1869	2,664	104	
EDPE	0802	Elementary Education	0	384	384	0	384	13	
EDPE	0803	Secondary Education	0	65	65	0	65	2	
EDPE	0808	Special Education	0	174	174	414	588	23	
EDPE	0823	Early Childhood Education	0	170	170	0	170	6	
EDPE	0826	Guidance/Counseling	0	0	0	720	720	30	
EDPE	0827	Elementary & Secondary School Admin	0	0	0	252	252	11	
EDPE	0835	Physical Education	70	0	70	0	70	2	
EDPE	0837	Health Education	1521	28	1549	0	1,549	52	
		EDPE TOTAL	2056	1151	3207	3255	6,462	243	11.9%
ENGL	1102	French	219	0	219	0	219	7	
ENGL	1105	Spanish	537	3	540	0	540	18	
ENGL	1501	English	4425	1200	5625	90	5,715	191	
		ENGL TOTAL	5181	1203	6384	90	6,474	217	10.7%
HPIS	1509	Philosophy	1113	84	1197	0	1,197	40	
HPIS	2205	History	1818	132	1950	0	1,950	65	
HPIS	2206	Geography	327	0	327	0	327	11	
		HPIS TOTAL	3258	216	3474	0	3,474	116	5.7%
MATH	1701	Mathematics	2462	132	2594	54	2,648	89	
MATH	9530	Developmental Math	3024	0	3024	0	3,024	101	
		MATH TOTAL	5486	132	5618	54	5,672	190	9.3%
NASC	0401	Biology	1689	629	2318	0	2,318	77	
NASC	1901	Physical Science	932	0	932	0	932	31	
NASC	1902	Physics	329	27	356	0	356	12	
NASC	1905	Chemistry	761	27	788	0	788	26	
		NASC TOTAL	3711	683	4394	0	4,394	146	7.2%
NURS	1203	NURSING	240	1188	1428	240	1,668	58	
		NURS TOTAL	240	1188	1428	240	1,668	58	2.8%
PSYC	2001	Psychology	1492	1518	3010	1258	4,268	153	
		PSYC TOTAL	1492	1518	3010	1258	4,268	153	7.5%
SOWK	2104	Social Work	237	641	878	0	878	29	
		SOWK TOTAL	237	641	878	0	878	29	1.4%
		Praxis	0	0	0	0	-	0	
	1801	Military Science	63	68	131	0	131	4	
	4999	IDIS - Technology	0	0	0	0	-	0	
	9500	Freshman Seminar	2241	0	2241	0	2,241	75	
		OTHER TOTAL	2304	68	2372	0	2,372	79	3.9%
		TOTAL CREDITS	34,087	16,638	50,725	8,142	58,867		
		TOTAL FTES*	2,272	1,109	3,382	679	4,060	2,030	100%

Note:* FTES = Full-Time Equivalent Student

FTES Formula for calculating Lower & Upper Undergraduate Students: $\text{Total Credit Hours}/15$

FTES Formula for calculating Graduate Students: $\text{Total Credit Hours}/12$

BOWIE STATE UNIVERSITY
Fall 2002 Credit Hours By Department

DEPT	HEGIS	DISCIPLINE	Undergraduate			Graduate	Total Cr. Hrs.	FTES	%Total FTES
			Lower	Upper	Total				
			CREDIT	HOURS					
ARTS	1001	Art	237	871	1108	0	1,108	37	
ARTS	1004	Music, Applied	287	11	298	0	298	10	
ARTS	1005	Music	355	147	502	0	502	17	
ARTS	1007	Theatre	171	10	181	0	181	6	
		ARTS TOTAL	1050	1039	2089	0	2,089	70	3.6%
BSHS	2004	Human Resource Dev.	0	0	0	791	791	33	
BSHS	2202	Anthropology	381	72	453	0	453	15	
BSHS	2208	Sociology	858	1245	2103	0	2,103	70	
BSHS	2209	Criminal Justice	189	339	528	0	528	18	
		BSHS TOTAL	1428	1656	3084	791	3,875	136	7.0%
BEPA	0502	Accounting	603	510	1113	153	1,266	43	
BEPA	0506	Business Administration	1137	1500	2637	231	2,868	98	
BEPA	0597	Management	270	1302	1572	552	2,124	75	
BEPA	0702	Management Information Sys.	0	0	0	885	885	37	
BEPA	2102	Public Administrator	0	0	0	228	228	10	
BEPA	2204	Economics	654	1059	1713	12	1,725	58	
		BEPA TOTAL	2664	4371	7035	2061	9,096	320	16.4%
COMM	0602	Journalism	285	408	693	0	693	23	
COMM	0605	Communications	0	1059	1059	0	1,059	35	
COMM	0699	Organizational Comm	0	0	0	276	276	12	
COMM	1506	Speech/Linguistics	1416	189	1605	0	1,605	54	
		COMM TOTAL	1701	1656	3357	276	3,633	123	6.3%
COSC	0701	Computer Science	1746	462	2208	276	2,484	85	
	799	Computer Technology	774	1044	1818	0		61	
		COSC TOTAL	2520	1506	4026	276	4,302	146	7.5%
EDPE	0801	Education	544	273	817	2178	2,995	118	
EDPE	0802	Elementary Education	0	347	347	0	347	12	
EDPE	0803	Secondary Education	0	49	49	0	49	2	
EDPE	0808	Special Education	0	174	174	561	735	29	
EDPE	0823	Early Childhood Education	0	180	180	0	180	6	
EDPE	0826	Guidance/Counseling	0	0	0	831	831	35	
EDPE	0827	Elementary & Secondary School Admin	0	0	0	372	372	16	
EDPE	0835	Physical Educator	118	0	118	0	118	4	
EDPE	0837	Health Education	1236	0	1236	0	1,236	41	
		EDPE TOTAL	1898	1023	2921	3942	6,863	262	13.4%
ENGL	1102	French	213	0	213	0	213	7	
ENGL	1105	Spanish	507	0	507	0	507	17	
ENGL	1501	English	3678	1110	4788	84	4,872	163	
		ENGL TOTAL	4398	1110	5508	84	5,592	187	9.6%
HPIS	1509	Philosophy	1029	87	1116	0	1,116	37	
HPIS	2205	History	1992	231	2223	0	2,223	74	
HPIS	2206	Geography	315	0	315	0	315	11	
		HPIS TOTAL	3336	318	3654	0	3,654	122	6.2%
MATH	1701	Mathematics	2150	156	2306	60	2,366	79	
MATH	9530	Developmental Math	2598	0	2598	0	2,598	87	
		MATH TOTAL	4748	156	4904	60	4,964	166	8.5%
NASC	0401	Biology	1633	556	2189	0	2,189	73	
NASC	1901	Physical Science	624	0	624	0	624	21	
NASC	1902	Physics	349	0	349	0	349	12	
NASC	1905	Chemistry	624	39	663	0	663	22	
		NASC TOTAL	3230	595	3825	0	3,825	128	6.5%
NURS	1203	NURSING	201	504	705	271	976	35	
		NURS TOTAL	201	504	705	271	976	35	1.8%
PSYC	2001	Psychology	1501	1269	2770	1366	4,136	149	
		PSYC TOTAL	1501	1269	2770	1366	4,136	149	7.6%
SOWK	2104	Social Work	174	571	745	0	745	25	
		SOWK TOTAL	174	571	745	0	745	25	1.3%
	1801	Electives	57	0	57	0	57	2	
	4999	Military Science	52	68	120	0	120	4	
	9500	IDIS - Technology	370	291	661	0	661	22	
		Orientation	1662	0	1662	0	1,662	55	
		OTHER TOTAL	2141	359	2500	0	2,500	83	4.3%
		TOTAL CREDITS	30,990	16,133	47,123	9,127	56,250		
		TOTAL FTES*	2,066	1,076	3,142	761	3,902	1,951	100%

Note:* FTES = Full-Time Equivalent Student
 FTES Formula for calculating Lower & Upper Undergraduate Students $\text{Total Credit Hours}/15$
 FTES Formula for calculating Graduate Student $\text{Total Credit Hours}/12$

BOWIE STATE UNIVERSITY

Maryland and Overseas Headcount

Maryland													
Fall													
	1991	1992	1993	1994	1995	1996	1997	1998	1999	2000	2001	2002	2003
Undergraduate	1,965	3,209	3,268	3,238	3,423	3,110	3,157	3,154	3,114	3,109	3,542	3,673	3,988
Graduate	1,472	1,600	1,678	1,658	1,835	1,957	2,010	1,870	1,656	1,591	1,639	1,584	1,466
Total	3,437	4,809	4,946	4,896	5,258	5,067	5,167	5,024	4,770	4,700	5,181	5,257	5,454

Overseas													
Fall													
	1996	1997	1998	1999	2000	2001	2002	2003					
Graduate	481	537	386	352	320	304	358	350					

Maryland and Overseas Credit Hours

Maryland												
Fiscal Year												
	FY 1993	FY 1994	FY 1995	FY 1996	FY 1997	FY 1998	FY 1999	FY 2000	FY 2001	FY 2002	FY 2003	
Undergraduate	74,636	74,041	76,299	79,026	73,257	73,985	76,188	74,813	76,798	75,746	75,746	
Graduate	17,571	17,666	17,608	19,525	20,828	20,860	18,864	17,138	19,034	16,472	16,775	
Total	92,207	91,707	93,907	98,551	94,085	94,845	95,052	91,951	95,832	92,218	92,521	

Overseas						
Fiscal Year						
	FY 1998	FY 1999	FY 2000	FY 2001	FY 2002	FY 2003
Graduate	5,988	6,966	6,441	53,910	6,771	6,597

Maryland											
Fiscal Year											
		FY 1995	FY 1996	FY 1997	FY 1998	FY 1999	FY 2000	FY 2001	FY 2002	FY 2003	
Undergraduate	Credit Hours	76,299	79,026	73,257	73,985	76,188	74,813	76,798	75,746	75,746	
	FTES	2,543	2,634	2,442	2,466	2,540	2,494	2,525	2,593	2,525	
Graduate	Credit Hours	17,608	19,525	20,828	20,860	18,864	17,138	19,034	16,472	16,775	
	FTES	734	814	868	869	786	714	699	721	699	
Total	Credit Hours	93,907	98,551	94,085	94,845	95,052	91,951	95,832	92,218	92,521	
Total	FTES	3,277	3,448	3,310	3,335	3,326	3,208	3,224	3,314	3,224	

Europe							
Fiscal Year							
		FY 1998	FY 1999	FY 2000	FY 2001	FY 2002	FY 2003
	Credit Hours	5,988	6,996	6,441	5,390	6,771	6,597
	FTES	250	292	268	225	282	275

Note: Overseas data for Fall 2000 is an estimate based on reported enrollments - final data not available until November 7.

BOWIE STATE UNIVERSITY

Maryland and Overseas Degrees Conferred

Degrees Awarded	FY 1993	FY 1994	FY 1995	FY 1996	FY 1997	FY 1998	FY 1999	FY 2000	FY 2001	FY 2002	FY 2003
Maryland											
Undergraduate	378	460	503	510	485	508	532	513	533	570	539
Graduate	339	371	399	366	396	325	361	480	500	393	390
Overseas	--	2	75	134	146	176	156	108	84	82	103
Total	717	833	977	1,010	1,027	1,009	1,049	1,101	1,117	1,045	1,032

Maryland and Overseas Faculty

Faculty	Fall 1993	Fall 1994	Fall 1995	Fall 1996	Fall 1997	Fall 1998	Fall 1999	Fall 2001	Fall 2002	Fall 2003
Full-Time										
Maryland	130	139	146	139	140	159	156	149	149	164
Overseas	30	22	22	26	18	9	-	-	-	-
Part-Time										
Maryland	67	83	110	112	150	136	185	159	193	142
Overseas	--	8	8	5	2	7	14	18	22	-
Total	227	252	286	282	310	311	355	326	364	306

Degrees Awarded

BOWIE STATE UNIVERSITY

Degrees Conferred by Level

Academic Year	Bachelor's Degrees	Master's Degrees	All Degrees	% Change From Previous Year
1986	216	127	343	
1987	195	129	324	-6%
1988	213	131	344	6%
1989	240	153	393	14%
1990	261	197	458	17%
1991	266	198	464	1%
1992	307	258	565	22%
1993	378	339	717	27%
1994	460	373	833	16%
1995	503	474	977	17%
1996	510	500	1010	3%
1997	485	542	1027	2%
1998	508	501	1009	-2%
1999	532	517	1049	4%
2000	513	480	993	-5%
2001	533	500	1033	4%
2002	568	395	963	-7%
2003	539	390	929	-4%

Note: The Overseas Degrees from AY 1994 through AY 1998 were duplicated.

BOWIE STATE UNIVERSITY
Degrees Conferred by Department

Department	FY 2002				FY 2003			
	Ug	Grad	Total	% Total	Ug	Grad	Total	% Total
Behavioral Sciences & Human Services	82	24	106	11%	64	100	164	18%
Business Admin., Economics, & Public Admin.	145	162	307	32%	118	120	238	26%
Communications	49	11	60	6%	54	15	69	7%
Computer Science	19	15	34	4%	89	11	100	11%
Education	21	123	144	15%	32	131	163	18%
English & Modern Languages	8	1	9	1%	7	0	7	1%
Fine & Performing Arts	14	N/A	14	1%	9	N/A	9	1%
History and Government	16	N/A	16	2%	15	N/A	15	2%
Mathematics	5	1	6	1%	8	0	8	1%
Natural Sciences	15	N/A	15	2%	11	N/A	11	1%
Nursing	36	18	54	6%	29	13	42	5%
Psychology	55	38	93	10%	55	0	55	6%
Social Work	26	N/A	26	3%	15	N/A	15	2%
Technology*	79	N/A	79	8%	33	N/A	33	4%
Total	570	393	963	100%	539	390	929	100%

*Note: * Interdisciplinary Studies*

BOWIE STATE UNIVERSITY

Degrees Conferred by Major

Bachelor's Degree

Hegis	Discipline	1997	1998	1999	2000	2001	2002	2003
40100	Biology	15	6	15	21	29	15	11
50601	Business Administration	153	151	142	155	138	143	118
60200	Journalism	18	8	5	1	0	0	1
60500	Communications	33	39	44	46	47	49	53
70100	Computer Science	13	15	16	20	15	19	21
79903	Computer Technology	N/A	N/A	N/A	N/A	N/A	N/A	68
80200	Elementary Education	41	29	31	25	31	14	27
82300	Early Childhood Education	21	14	6	8	10	7	4
83100	Art Education	0	3	0	0	0	0	0
83200	Music Education	2	2	1	1	0	1	1
83400	Science Education	0	1	0	1	0	0	0
83500	Physical Education	2	0	0	0	0	0	0
100100	Fine Arts	5	3	9	12	11	13	9
100700	Theater Arts	0	1	0	0	0	0	0
120300	Nursing	28	34	34	27	28	36	29
150100	English	9	6	12	10	6	8	7
170100	Mathematics	9	8	13	6	7	5	8
499900	Pedology	0	0	0	0	0	10	13
200101	Psychology	36	48	63	48	42	55	55
210200	Public Administration	1	0	0	0	0	0	0
210400	Social Work	23	45	30	28	23	26	15
220500	History	7	8	7	12	13	16	15
220700	Political Science	11	21	11	14	7	0	0
220802	Sociology	45	57	60	52	52	72	51
221000	International Studies	1	1	0	0	0	0	0
499906	Technology *	12	8	33	26	74	79	33
Total Bachelor's		485	508	532	513	533	568	539

* *Interdisciplinary Studies*

Master's Degree

Hegis	Discipline	1997	1998	1999	2000	2001	2002	2003
50602	Business Administration	119	111	152	97	96	63	48
69902	Org. Communications	17	20	20	19	9	11	15
70100	Computer Science	27	29	18	24	11	15	11
70200	Management Information Systems	74	96	101	82	90	101	65
80200	Elementary Education	7	8	7	7	4	5	7
80301	Secondary Education	17	7	6	6	9	13	10
080312	Teaching (Mat)**	3	11	17	22	21	9	10
80800	Special Education	13	21	17	16	29	19	20
82601	Guidance & Counseling	79	59	43	39	50	36	22
82700	Elementary/Secondary School Admin.	42	26	39	53	63	24	38
83000	Reading Education	13	11	13	26	35	17	46
120300	Nursing	8	11	7	15	21	18	13
150100	English	0	0	0	0	3	1	0
170301	Mathematics (Applied)	0	0	0	0	1	1	0
200401	Counseling Psychology	88	71	48	56	48	38	56
200403	Human Resource Development	35	20	29	18	10	24	22
210200	Public Administration	0	0	0	0	0	0	7
Total Master's		542	501	517	480	500	395	390

** *Master of Arts in Teaching*

BOWIE STATE UNIVERSITY

Degrees Conferred by Program, Level and Race

Bachelor's Degree (AY 2002-2003)

Hegis	Programs	Black			Native American			Asian/PI			Hispanic			White			Other			Total Bachelor's
		[M]	[F]	TOT	[M]	[F]	TOT	[M]	[F]	TOT	[M]	[F]	TOT	[M]	[F]	TOT	[M]	[F]	TOT	
0401	Biology	1	8	9	0	0	0	0	2	2	0	0	0	0	0	0	0	0	0	11
0506	Business Administration	50	60	110	0	0	0	0	2	2	1	0	1	1	4	5	0	0	0	118
0602	Journalism	1	0	1	0	0	0	0	0	0	0	0	0	0	0	0	0	0	0	1
0605	Communications Media	24	28	52	0	0	0	0	0	0	0	0	0	0	0	0	0	1	1	53
0701	Computer Science	11	7	18	0	0	0	0	1	1	0	0	0	0	1	1	0	1	1	21
79903	Computer Technology	37	24	61	0	0	0	2	0	2	0	0	0	0	2	2	3	0	3	68
0802	Elementary Educator	3	15	18	0	0	0	0	0	0	0	0	0	0	9	9	0	0	0	27
0823	Early Childhood Educator	0	2	2	0	0	0	0	0	0	0	0	0	0	1	1	0	1	1	4
0832	Music Education	1	0	1	0	0	0	0	0	0	0	0	0	0	0	0	0	0	0	1
1001	Fine Arts	4	4	8	0	0	0	0	1	1	0	0	0	1	0	1	0	0	0	10
1203	Nursing	0	23	23	0	0	0	0	0	0	0	0	0	0	4	4	0	1	1	28
1501	English	1	5	6	0	0	0	0	0	0	0	0	0	0	1	1	0	0	0	7
1701	Mathematics	4	4	8	0	0	0	0	0	0	0	0	0	0	0	0	0	0	0	8
2001	Psychology	9	38	47	0	0	0	0	0	0	0	0	0	2	4	6	0	2	2	55
2104	Social Work	1	12	13	0	0	0	0	0	0	0	1	1	1	0	1	0	0	0	15
2205	History	7	8	15	0	0	0	0	0	0	0	0	0	0	0	0	0	0	0	15
4999	Pedology	2	8	10	0	0	0	0	0	0	0	0	0	0	3	3	0	0	0	13
2207	Political Science	0	0	0	0	0	0	0	0	0	0	0	0	0	0	0	0	0	0	0
2208	Sociology	15	33	48	0	0	0	0	0	0	0	0	0	3	0	3	0	0	0	51
4999	Technology *	9	6	15	0	0	0	0	0	0	0	1	1	8	9	17	0	0	0	33
Total		180	285	465	0	0	0	2	6	8	1	2	3	16	38	54	3	6	9	539

Master's Degree (AY 2002-2003)

Hegis	Programs	Black			Native-American			Asian/PI			Hispanic			White			Other			Total Master's
		[M]	[F]	TOT	[M]	[F]	TOT	[M]	[F]	TOT	[M]	[F]	TOT	[M]	[F]	TOT	[M]	[F]	TOT	
0506	Administrative Management	5	22	27	0	0	0	0	1	1	1	1	2	13	5	18	0	0	0	48
0699	Organizational Communication	4	11	15	0	0	0	0	0	0	0	0	0	0	0	0	0	0	0	15
0701	Computer Science	0	1	1	0	0	0	5	1	6	0	0	0	3	0	3	1	0	1	11
0702	Management Information System	12	24	36	0	0	0	1	1	2	2	0	2	18	5	23	2	0	2	65
0802	Elementary Educator	1	3	4	0	0	0	0	0	0	0	0	0	1	2	3	0	0	0	7
0803	Secondary Educator	1	4	5	0	0	0	0	0	0	0	0	0	2	3	5	0	0	0	10
80312	Teaching (Mat)**	2	4	6	0	0	0	0	0	0	0	0	0	2	2	4	0	0	0	10
0808	Special Education	1	9	10	0	0	0	1	0	1	0	1	1	0	8	8	0	0	0	20
0826	Guidance/Counseling	5	10	15	0	0	0	0	0	0	0	0	0	1	6	7	0	0	0	22
0827	Elem./Sec. School Administration	8	7	15	1	1	2	0	0	0	0	0	0	11	10	21	0	0	0	38
0830	Reading Education	1	17	18	0	0	0	0	0	0	0	1	1	1	26	27	0	0	0	46
1203	Nursing	0	4	4	0	0	0	0	1	1	0	2	2	0	6	6	0	0	0	13
1501	English	0	0	0	0	0	0	0	0	0	0	0	0	0	0	0	0	0	0	0
1701	Mathematics	0	0	0	0	0	0	0	0	0	0	0	0	0	0	0	0	0	0	0
0401	Counseling Psychology	7	33	40	0	0	0	1	1	2	0	2	2	4	8	12	0	0	0	56
2102	Public Administrator	2	5	7	0	0	0	0	0	0	0	0	0	0	0	0	0	0	0	7
0403	Human Resource Development	0	21	21	0	0	0	0	0	0	0	0	0	0	1	1	0	0	0	22
Total		49	175	224	1	1	2	8	5	13	3	7	10	56	82	138	3	0	3	390

* Interdisciplinary Studies

** Master of Arts in Teaching

BOWIE STATE UNIVERSITY
Degrees Conferred by Program, Level and Race

Bachelor's Degree (AY 2001-2002)

Hegis	Programs	Black			Native American			Asian/PI			Hispanic			White			Other			Total Bachelor's
		[M]	[F]	TOT	[M]	[F]	TOT	[M]	[F]	TOT	[M]	[F]	TOT	[M]	[F]	TOT	[M]	[F]	TOT	
0401	Biology	4	10	14	0	0	0	0	0	0	0	0	0	1	1	0	0	0	15	
0506	Business Administration	42	85	127	0	2	2	1	2	3	0	2	2	3	6	9	0	0	143	
0602	Journalism	0	0	0	0	0	0	0	0	0	0	0	0	0	0	0	0	0	0	
0605	Communications Media	21	26	47	0	0	0	1	0	1	0	0	0	1	1	0	0	0	49	
0701	Computer Science	10	5	15	0	0	0	3	1	4	0	0	0	0	0	0	0	0	19	
0802	Elementary Education	2	5	7	0	1	1	0	0	0	0	0	0	2	4	6	0	0	14	
0823	Early Childhood Education	0	5	5	0	0	0	0	0	0	0	0	0	2	2	0	0	0	7	
70200	Computer Information Systems	1	0	1	0	0	0	0	0	0	0	0	0	1	1	0	0	0	2	
0832	Music Education	1	0	1	0	0	0	0	0	0	0	0	0	0	0	0	0	0	1	
1001	Fine Arts	5	6	11	0	0	0	0	0	0	0	0	1	1	2	0	0	0	13	
1007	Theatre Arts	0	0	0	0	0	0	0	0	0	0	0	0	0	0	0	0	0	0	
1203	Nursing	2	30	32	1	0	1	0	0	0	0	0	1	1	2	0	1	1	36	
1501	English	4	3	7	0	0	0	0	0	0	0	0	0	1	1	0	0	0	8	
1701	Mathematics	4	0	4	0	0	0	0	0	0	0	0	0	0	0	0	1	1	5	
2001	Psychology	3	46	49	0	1	1	0	1	1	0	2	2	0	2	2	0	0	55	
2104	Social Work	5	17	22	0	1	1	0	1	1	0	0	0	3	3	0	0	0	27	
2205	History	6	7	13	0	0	0	0	0	0	0	0	1	1	2	0	1	1	16	
4999	Pedology	0	8	8	0	0	0	0	0	0	0	1	1	0	1	1	0	0	10	
2208	Sociology	20	41	61	0	0	0	0	0	0	2	1	3	3	4	7	0	0	71	
2210	International Studies	0	0	0	0	0	0	0	0	0	0	0	0	0	0	0	0	0	0	
4999	Technology *	32	33	65	0	0	0	0	0	0	1	1	2	5	6	11	0	1	79	
Total		162	327	489	1	5	6	5	5	10	3	7	10	16	35	51	0	4	4	570

Master's Degree (AY 2001-2002)

Hegis	Programs	Black			Native-American			Asian/PI			Hispanic			White			Other			Total Master's
		[M]	[F]	TOT	[M]	[F]	TOT	[M]	[F]	TOT	[M]	[F]	TOT	[M]	[F]	TOT	[M]	[F]	TOT	
0506	Administrative Management	7	34	41	0	1	1	1	1	2	0	0	0	9	10	19	0	0	0	63
0699	Organizational Communications	1	10	11	0	0	0	0	0	0	0	0	0	0	0	0	0	0	0	11
0701	Computer Science	2	0	2	0	0	0	4	3	7	0	0	0	2	2	4	1	1	2	15
0702	Management Information Systems	21	29	50	0	0	0	4	5	9	1	0	1	27	7	34	5	0	5	99
0802	Elementary Education	0	3	3	0	0	0	0	0	0	0	0	0	2	2	0	0	0	5	
0803	Secondary Education	1	2	3	0	0	0	0	0	0	0	0	0	4	6	10	0	0	0	13
80312	Teaching (Mat)**	0	5	5	0	0	0	0	0	0	0	0	0	4	4	0	0	0	9	
0808	Special Education	1	11	12	0	0	0	0	0	0	0	2	2	0	5	5	0	0	0	19
0826	Guidance/Counseling	3	21	24	0	0	0	0	0	0	0	1	1	1	10	11	0	0	0	36
0827	Elem./Sec. School Administration	5	11	16	0	0	0	0	1	1	0	0	0	2	5	7	0	0	0	24
0830	Reading Education	2	3	5	0	0	0	0	0	0	0	1	1	0	11	11	0	0	0	17
1203	Nursing	0	12	12	0	0	0	0	0	0	0	0	0	6	6	0	0	0	0	18
1501	English	0	0	0	0	0	0	0	0	0	0	1	1	0	0	0	0	0	0	1
1701	Mathematics	1	0	1	0	0	0	0	0	0	0	0	0	0	0	0	0	0	0	1
0401	Counseling Psychology	7	24	31	0	0	0	0	0	0	0	1	1	0	4	4	0	0	0	36
0403	Human Resource Development	2	21	23	0	0	0	0	0	0	0	1	1	0	1	1	0	0	0	25
Total		53	186	239	0	1	1	9	10	19	1	7	8	45	73	118	6	1	7	392

* Interdisciplinary Studies

** Master of Arts in Teaching

BOWIE STATE UNIVERSITY

Degrees Conferred by Race and Level

Bachelor's Degree

Race	AY97	AY98	AY99	AY00	AY01	AY02	AY03
Black	374	409	430	442	440	489	464
White	95	73	76	55	76	51	54
Other	16	26	26	16	17	30	21
Total	485	508	532	513	533	570	539
% African-American	77%	81%	81%	86%	83%	86%	86%
% White	20%	14%	14%	11%	14%	9%	10%
% Other	3%	5%	5%	3%	3%	5%	4%

Master's Degree

Race	AY97	AY98	AY99	AY00	AY01	AY02	AY03
Black	278	287	276	275	275	239	223
White	208	157	191	155	182	120	138
Other	56	57	50	50	43	34	29
Total	542	501	517	480	500	393	390
% African-American	51%	57%	53%	57%	55%	61%	57%
% White	38%	31%	37%	32%	36%	31%	35%
% Other	10%	11%	10%	10%	9%	9%	7%

All Degrees

Race	AY97	AY98	AY99	AY00	AY01	AY02	AY03
African-American	652	696	706	717	715	728	687
White	303	230	267	210	258	171	192
Other	72	83	76	66	60	64	50
Total	1027	1009	1049	993	1033	963	929
% African-American	63%	69%	67%	72%	69%	76%	74%
% White	30%	23%	25%	21%	25%	18%	21%
% Other	7%	8%	7%	7%	6%	7%	5%

BOWIE STATE UNIVERSITY

Degrees Conferred by Gender and Level

Bachelor's Degree

Gender	AY97	AY98	AY99	AY00	AY01	AY02	AY03
Male	160	144	161	187	171	188	202
Female	325	364	371	326	362	382	337
Total	485	508	532	513	533	570	539
% Change	5%	5%	5%	-4%	4%	7%	-5%

Master's Degree

Gender	AY97	AY98	AY99	AY00	AY01	AY02	AY03
Male	182	195	180	155	176	116	120
Female	360	306	337	325	324	277	270
Total	542	501	517	480	500	393	390
% Change	45%	-8%	3%	-7%	4%	-21%	-1%

All Degrees

Gender	AY97	AY98	AY99	AY00	AY01	AY02	AY03
Male	342	339	341	342	347	304	322
Female	685	670	708	651	686	659	607
Total	1027	1009	1049	993	1033	963	929
% Change	23%	-2%	4%	-5%	4%	-7%	-4%

Financial Aid

BOWIE STATE UNIVERSITY

Financial Aid Awarded By Race

Fiscal Year 2002

Undergraduate Recipients	Black	White	Others	Total
Total Dollar Amount	\$17,295,517	\$795,460	\$429,063	\$18,520,040
Total Number of Awards	5,873	273	184	6,330
Total Unduplicated Number of Aid Recipients	2,273	119	76	2,468
Undergraduate Enrollment	3,260	235	178	3,673
Unduplicated Recipients as % of Ug. Enrollment	69.7%	50.6%	42.7%	67.2%
Graduate Recipients	Black	White	Others	Total
Total Dollar Amount	\$5,004,184	\$398,991	\$119,277	\$5,522,452
Total Number of Awards	529	57	18	604
Total Unduplicated Number of Aid Recipients	485	51	15	551
Graduate Enrollment	1,180	315	89	1,584
Unduplicated Recipients as % of Grad. Enrollment	41.1%	16.2%	16.9%	34.8%
All Recipients	Black	White	Others	Total
Total Dollar Amount	\$22,299,701	\$1,194,451	\$548,340	\$24,042,492
Total Number of Award	6,402	330	202	6,934
Average \$\$ per Awards	\$3,483	\$3,620	\$2,715	\$3,467
Total Unduplicated Number of Aid Recipients	2,758	170	91	3,019
Total Enrollment	4,440	550	267	5,257
Unduplicated Recipients as % of Total Enrollment	62.1%	30.9%	34.1%	57.4%

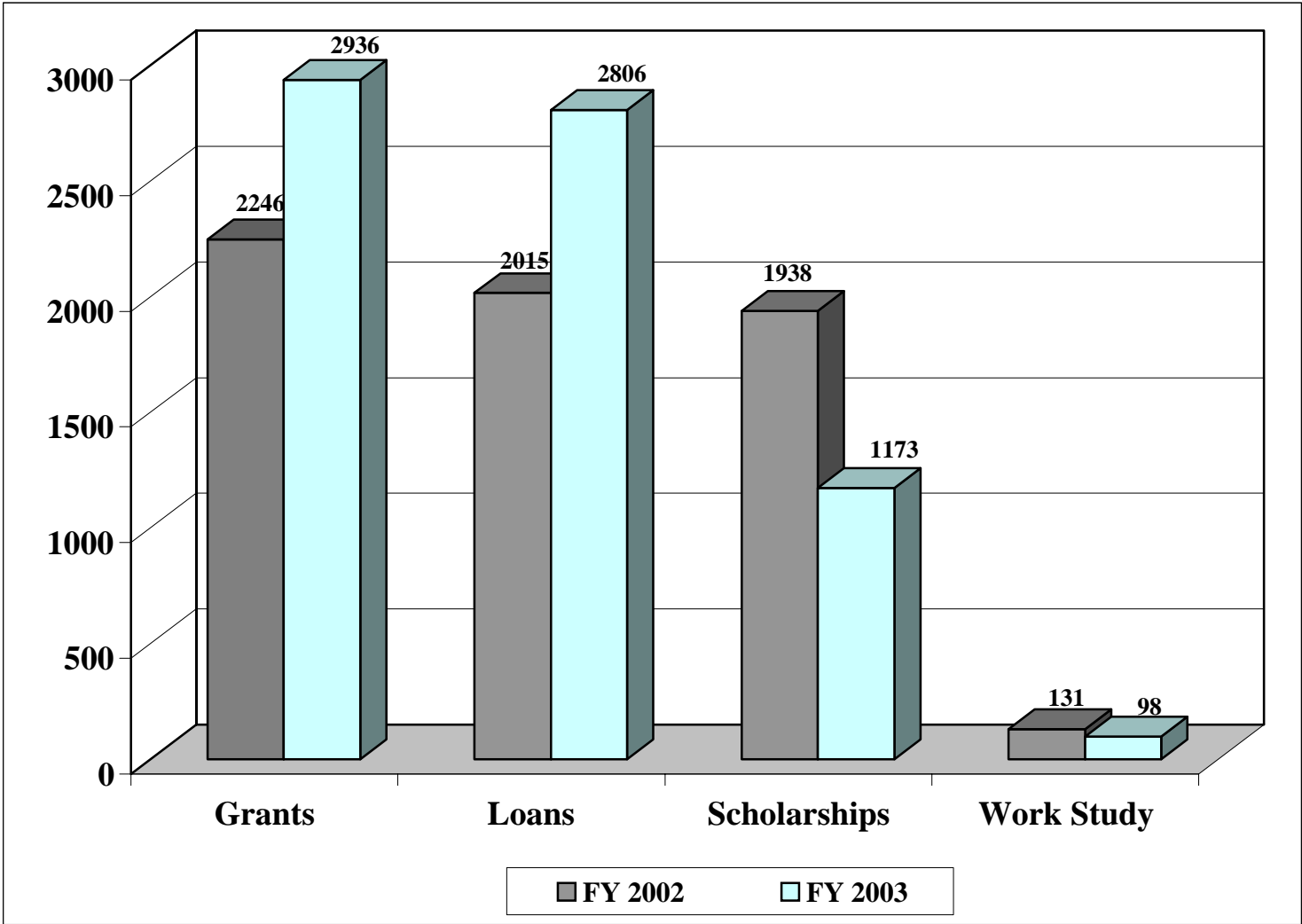
BOWIE STATE UNIVERSITY

Financial Aid Awarded By Race

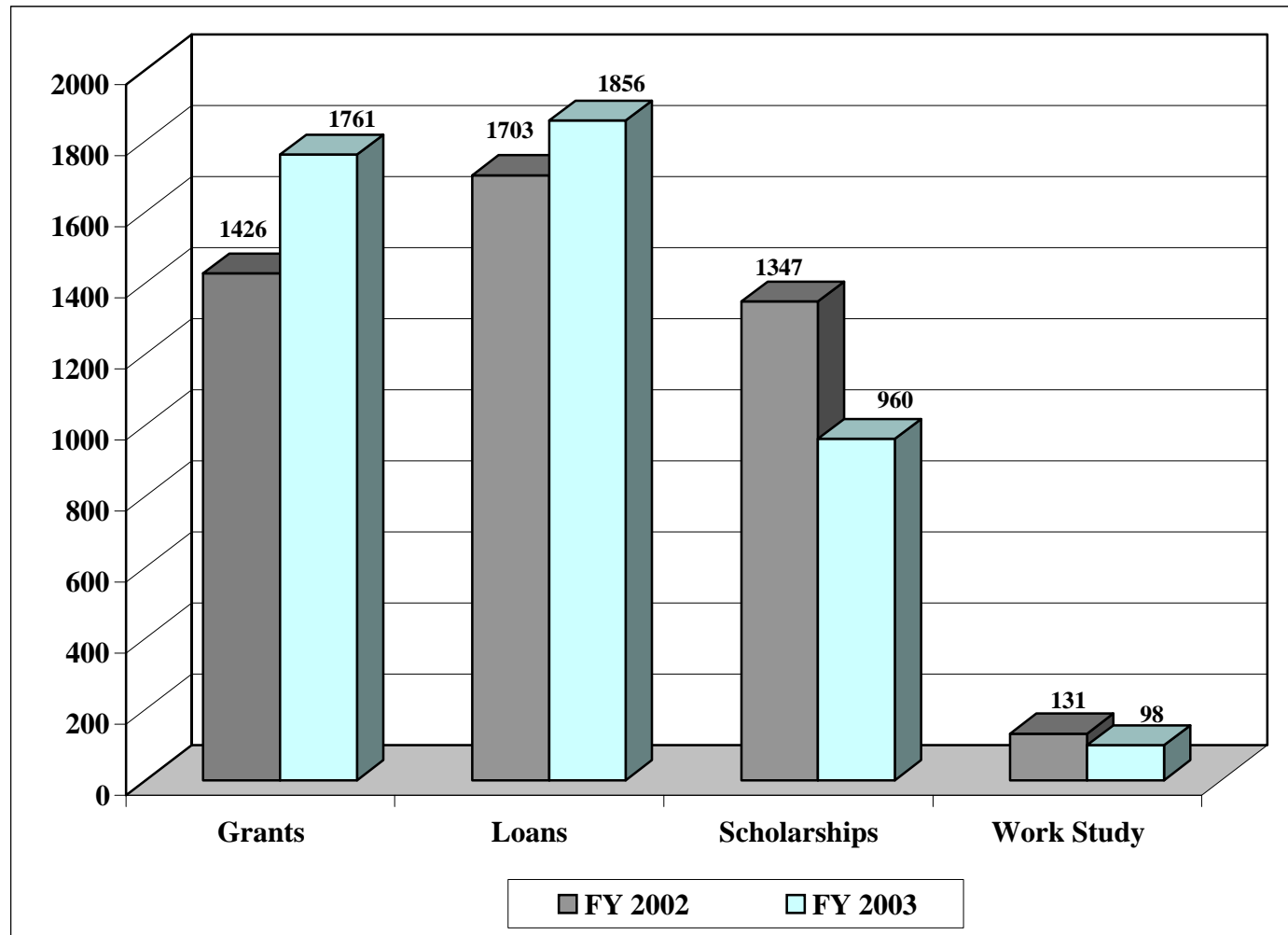
Fiscal Year 2003

Undergraduate Recipients	Black	White	Others	Total
Total Dollar Amount	\$18,801,839	\$869,763	\$562,064	\$20,233,666
Total Number of Awards	6,529	274	210	7,013
Total Unduplicated Number of Aid Recipients	2,471	125	83	2,679
Undergraduate Enrollment	3,567	227	194	3,988
Unduplicated Recipients as % of Ug. Enrollment	69.3%	55.1%	42.8%	67.2%
Graduate Recipients	Black	White	Others	Total
Total Dollar Amount	\$5,969,244	\$559,082	\$238,656	\$6,766,982
Total Number of Awards	956	91	42	1,089
Total Unduplicated Number of Aid Recipients	558	56	29	643
Graduate Enrollment	1,119	256	91	1,466
Unduplicated Recipients as % of Grad. Enrollment	49.9%	21.9%	31.9%	43.9%
All Recipients	Black	White	Others	Total
Total Dollar Amount	\$24,771,083	\$1,428,845	\$800,720	\$27,000,648
Total Number of Award	7,485	365	252	8,102
Average \$\$ per Awards	\$3,309	\$3,915	\$3,177	\$3,333
Total Unduplicated Number of Aid Recipients	3,029	181	112	3,322
Total Enrollment	4,686	483	285	5,454
Unduplicated Recipients as % of Total Enrollment	64.6%	37.5%	39.3%	60.9%

BOWIE STATE UNIVERSITY
Number of Undergraduate Financial Aid Awards
by Type of Award



BOWIE STATE UNIVERSITY
Number of Unduplicated Undergraduate Financial Aid Recipients
Within Each Type of Award



BOWIE STATE UNIVERSITY

Number of Unduplicated Undergraduate Financial Aid Recipients Within Each Type of Award by Race

Fiscal Year 2003

	Grants		Loans		Scholarships		Work Study	
	Column #	Column Percent	Column #	Column Percent	Column #	Column Percent	Column #	Column Percent
Race	#	Percent	#	Percent	#	Percent	#	Percent
Black	1638	93.0%	1739	93.7%	895	93.2%	95	96.9%
White	67	3.8%	67	3.6%	49	5.1%	1	1.0%
Others	56	3.2%	50	2.7%	16	1.7%	2	2.0%
Total	1761	100%	1856	100%	960	100%	98	100%

Fiscal Year 2002

	Grants		Loans		Scholarships		Work Study	
	Column #	Column Percent	Column #	Column Percent	Column #	Column Percent	Column #	Column Percent
Race	#	Percent	#	Percent	#	Percent	#	Percent
Black	1311	91.9%	1602	90.9%	1242	92.2%	129	98.5%
White	68	4.8%	59	3.3%	65	4.8%	1	0.8%
Others	47	3.3%	101	5.7%	40	3.0%	1	0.8%
Total	1426	100%	1762	100%	1347	100%	131	100%

Housing and Residence Life

BOWIE STATE UNIVERSITY

Housing And Residence Life

Fall 2003

	Capacity			Occupancy			Difference Between Occupancy and Capacity
	Gender			Gender			
	Male	Female	Total	Male	Female	Total	
Residence Hall							
Towers (F) ***		160	160		194	194	34
Tubman (M) **		143	143	160		160	17
Holmes (M) **	107		107	126		126	19
Goodloe (C) *			31	16	12	28	-3
Haley (C)*			306	96	225	321	15
Kennard(F)***		76	76	83		83	7
Montpelier	20	45	65	20	45	65	0
Total	127	424	888	501	476	977	89

Source: Housing and Residence Life

Residence Legend: C* ----- Coed
M*----- Male
F***----- Female

BOWIE STATE UNIVERSITY

Housing And Residence Life

Fall 2002

Residence Hall	Capacity			Occupancy			Difference Between Occupancy and Capacity
	Male	Female	Total	Male	Female	Total	
Towers (F) ***	0	194	194	0	194	194	0
Tubman (M)**	148	0	148	148	0	148	0
Holmes (M)**	116	0	116	116	0	116	0
Goodloe (C)*	16	15	31	16	15	31	0
Haley (C)*	82	237	319	82	237	319	0
Kennard(F)***	0	82	82	0	82	82	0
Total	362	528	890	362	528	890	0

Fall 2001

Residence Hall	Capacity			Occupancy			Difference Between Occupancy & Capacity
	Male	Female	Total	Male	Female	Total	
Towers (C)*	98	97	195	93	93	186	-9
Tubman (C)*	26	117	143	10	147	157	14
Holmes (M)**	110	0	110	120	0	120	10
Goodloe (C)*	4	23	27	13	15	28	1
Haley (C)*	105	191	296	100	207	307	11
Kenard (F)	0	87	87	0	87	87	0
Total	343	515	858	336	549	885	27

Residence Legend: M** -- Male
 C* -- Coed

Library

BOWIE STATE UNIVERSITY

Library Information

<u>Use/Access</u>	<u>2002</u>	<u>2003</u>	<u>% Change</u>
Circulation Transactions-General collection	15,294	7,055	-53.87%
Interlibrary Loans-Received from other libraries	930	606	-34.84%
Reference Transactions per typical week	68	55	-19.12%
Information Services to Group-# of presentations	50	49	-2.00%
Public Service Hours per Typical Week	90	93	3.33%

<u>Collections</u>	<u>2002</u>	<u>2003</u>	<u>% Change</u>
Number of Volumes	238,438	242,907	1.87%
Number of Titles	183,121	240,938	31.57%
Number of Current Serial Subscriptions	720	760	5.56%

Source: Library

Faculty and Staff

BOWIE STATE UNIVERSITY

Full-Time Faculty and Staff by Race

Full-Time Executive/Administrative/Management Employees

Race	Fall 2000		Fall 2001		Fall 2002		Fall 2003	
	#	%	#	%	#	%	#	%
Black	23	74.2%	26	76.5%	22	73.3%	126	77.3%
Asian	0	0.0%	0	0.0%	0	0.0%	1	0.6%
Hispanic	0	0.0%	0	0.0%	0	0.0%	3	1.8%
White	8	25.8%	8	23.5%	8	26.7%	33	20.2%
Total	31	100%	34	100%	30	100%	163	100%

Full-Time Faculty

Race	Fall 2000		Fall 2001		Fall 2002		Fall 2003	
	#	%	#	%	#	%	#	%
Black	103	64.8%	94	63.1%	94	63.1%	100	61.0%
Native American	0	0.0%	0	0.0%	0	0.0%	2	1.2%
Asian	2	1.3%	2	1.3%	1	0.7%	2	1.2%
Hispanic	6	3.8%	10	6.7%	9	6.0%	9	5.5%
White	45	28.3%	41	27.5%	41	27.5%	48	29.3%
Unknown	3	1.9%	2	1.3%	4	2.7%	3	1.8%
Total	159	100%	149	100%	149	100%	164	100%

Full-Time " Other Professional" Employees *

Race	Fall 2000		Fall 2001		Fall 2002		Fall 2003	
	#	%	#	%	#	%	#	%
Black	84	80.8%	98	81.7%	102	83.6%	134	78.4%
Native American	2	1.9%	1	0.8%	0	0.0%	1	0.6%
Asian	1	1.0%	0	0.0%	0	0.0%	2	1.2%
Hispanic	1	1.0%	2	1.7%	3	2.5%	5	2.9%
White	14	13.5%	16	13.3%	14	11.5%	26	15.2%
Unknown	2	1.9%	3	2.5%	3	2.5%	3	1.8%
Total	104	100%	120	100%	122	100%	171	100%

* This category includes positions such as librarians, computer programmers, program analysts, and other degreed/technically qualified individuals.

BOWIE STATE UNIVERSITY

Faculty (Fall 2000 - Fall 2003)

Faculty by Degree Held

Degree Held	Fall 2000		Fall 2001		Fall 2002		Fall 2003	
	FT	PT	FT	PT	FT	PT	FT	PT
Bachelor's	2	5	1	14	1	6	42	9
Master's	47	75	46	85	49	107	43	62
1st Professional	4	4	3	4	2	8	7	14
Doctorate	106	67	99	56	97	72	72	57
<i>Total by Status</i>	<i>159</i>	<i>151</i>	<i>149</i>	<i>159</i>	<i>149</i>	<i>193</i>	<i>164</i>	<i>142</i>
Total	310		308		342		306	

Faculty by Rank

Rank	Fall 2000		Fall 2001		Fall 2002		Fall 2003	
	FT	PT	FT	PT	FT	PT	FT	PT
Professor	23	2	20	1	19	3	29	5
Associate Professor	23	1	21	2	22	2	33	2
Assistant Professor	77	0	73	0	68	0	67	2
Instructor	19	4	18	2	17	3	10	3
Lecturer	17	144	17	154	23	185	25	130
<i>Total by Status</i>	<i>159</i>	<i>151</i>	<i>149</i>	<i>159</i>	<i>149</i>	<i>193</i>	<i>164</i>	<i>142</i>
Total	310		308		342		306	

Faculty by Race

Race	Fall 2000		Fall 2001		Fall 2002		Fall 2003	
	FT	PT	FT	PT	FT	PT	FT	PT
Black	103	101	94	93	91	132	100	70
Native American	0	1	0	0	2	0	2	0
Asian	2	0	2	1	1	1	2	1
Hispanic	6	4	10	5	9	4	9	2
White	45	24	41	24	41	27	48	42
Unknown	3	21	2	36	4	30	3	27
<i>Total by Status</i>	<i>159</i>	<i>151</i>	<i>149</i>	<i>159</i>	<i>148</i>	<i>194</i>	<i>164</i>	<i>142</i>
Total	310		308		342		306	

Faculty by Age

Age Ranges	Fall 2000		Fall 2001		Fall 2002		Fall 2003	
	FT	PT	FT	PT	FT	PT	FT	PT
20-30 Years	5	4	0	6	1	3	6	2
31-40 Years	19	21	15	21	14	33	24	21
41-50 Years	45	48	29	34	28	55	33	27
51-60 Years	58	47	55	66	60	70	63	9
Over 60 Years	32	30	50	31	46	33	42	35
Median Age	53	51	52	51	55	51	54	52

BOWIE STATE UNIVERSITY

Faculty (Fall 2000 - Fall 2003)

Faculty by Gender

Sex	2000		2001		2002		2003	
	FT	PT	FT	PT	FT	PT	FT	PT
Male	90	98	86	91	85	113	96	79
Female	69	53	63	68	64	81	68	63
Total by Status	<i>159</i>	<i>151</i>	<i>149</i>	<i>159</i>	<i>149</i>	<i>194</i>	<i>164</i>	<i>142</i>
Total	310		308		343		306	

Full-Time Faculty by Rank and Gender

Rank	2000		2001		2002		2003	
	[M]	[F]	[M]	[F]	[M]	[F]	[M]	[F]
Professor	18	5	16	4	15	4	22	7
Associate Professor	14	9	11	10	11	11	18	15
Assistant Professor	42	35	40	33	37	31	35	32
Instructor	8	11	9	9	9	8	3	1
Lecturer	8	9	10	7	13	10	13	12
Total Full-Time	90	69	86	63	85	64	91	67

Part-Time Faculty by Rank and Gender

Rank	2000		2001		2002		2003	
	[M]	[F]	[M]	[F]	[M]	[F]	[M]	[F]
Profesor	0	0	1	0	1	2	3	2
Associate Professor	0	0	1	1	1	1	1	1
Assistant Professor	0	0	0	0	0	0	0	2
Instructor	2	2	0	2	0	3	0	3
Lecturer	93		89	65	110	75	55	30
Total Part-Time	95	2	91	68	112	79	59	36

Full-Time Faculty by Tenure Status

Tenure Status	2000		2001		2002		2003	
Tenured		78		70		70		81
Tenure Track		36		33		31		39
Other		45		46		48		44
Total		159		149		149		164

BOWIE STATE UNIVERSITY
Full-Time Faculty Mean Salary by Rank and Gender

Rank	Fall 2003			
	Male		Female	
	#	Average	#	Average
Professor	22	\$82,579	7	\$83,646
Associate Professor	18	\$62,006	15	\$60,807
Assistant Professor	35	\$52,685	32	\$54,046
Instructor	3	\$55,203	1	\$42,350
Lecturer	13	\$45,969	12	\$47,712
Total	91		67	

Rank	Fall 2002			
	Male		Female	
	#	Average	#	Average
Professor	15	\$80,794	4	\$82,960
Associate Professor	11	\$66,832	11	\$67,828
Assistant Professor	37	\$56,610	31	\$56,177
Instructor	9	\$50,364	8	\$44,697
Lecturer	13	\$40,841	10	\$42,819
Total	85		64	

Revenues and Expenditures

BOWIE STATE UNIVERSITY

Current Unrestricted Revenues

Revenues Sources	Actual 2001	Appropriated 2002	Allowance 2003	Actual 2002	Appropriated 2003	Allowance 2004	Actual 2003	Appropriated 2004	Allowance 2005
Tuition and Fees	\$17,212,868	\$17,232,111	\$17,965,363	\$18,761,586	\$21,351,763	\$24,607,411	\$21,884,323	\$25,957,744	\$28,539,890
State Appropriations	\$21,310,546	\$22,943,475	\$22,988,332	\$22,724,961	\$22,797,340	\$21,885,449	\$21,885,449	\$20,712,299	\$20,712,299
Federal Grants/Contracts	\$533,537	\$492,875	\$502,732	\$600,635	\$717,781	\$739,315	\$645,036	\$539,315	\$539,315
Private Gifts, Grants and Contracts	\$2,000			\$1,100					
State and Local Grants and Contracts	\$32,826	\$32,826	\$33,483	\$70,111	\$50,000	\$72,915	\$123,000	\$117,000	\$117,000
Sales & Services/Educational Activities	\$392,835	\$272,606	\$410,499	\$126,250	\$197,916	\$154,105	\$123,848	\$33,805	\$33,805
Sales & Services/Auxiliary Enterprises	\$6,851,272	\$7,241,650	\$7,867,628	\$7,562,442	\$8,010,028	\$9,864,022	\$7,704,164	\$9,707,315	\$9,822,935
Other Sources	(\$99,667)	\$43,472	(\$101,659)	\$475,010	\$229,946	\$244,411	\$98,672	\$358,396	\$195,960
Transfer from Fund Balance	(\$156,795)	\$920,382	(\$1,132,496)	\$550,940	(\$1,279,781)	(\$833,076)	(\$555,982)	(\$1,095,985)	(\$1,342,417)
Total Unrestricted Revenues	\$46,079,422	\$49,179,397	\$48,533,882	\$50,873,035	\$52,074,993	\$56,734,552	\$51,908,510	\$56,329,889	\$58,618,787

Current Restricted Revenues

Revenues Sources	Actual 2001	Appropriated 2002	Allowance 2003	Actual 2002	Appropriated 2003	Allowance 2004	Actual 2003	Appropriated 2004	Allowance 2005
Federal Grants and Contracts	\$7,680,294	\$6,935,482	\$7,143,546	\$11,335,224	\$10,984,143	\$11,533,350	\$11,163,768	\$12,377,078	\$12,377,078
Private Gifts, Grants and Contracts		\$506,027		\$628,210	\$983,321	\$1,032,487	\$948,224	\$110,978	\$110,978
State and Local Grants and Contracts	\$1,975,863	\$1,169,411	\$1,725,702	\$1,009,750	\$1,632,536	\$1,084,163	\$2,358,435	\$1,161,944	\$1,161,944
Other Sources									
Total Restricted Revenues	\$9,656,157	\$8,610,920	\$8,869,248	\$12,973,184	\$13,600,000	\$13,650,000	\$14,470,427	\$13,650,000	\$13,650,000
Total All Funds	\$55,735,579	\$57,790,317	\$57,403,130	\$63,846,219	\$65,674,993	\$70,384,552	\$66,378,937	\$69,979,889	\$72,268,787

SOURCE: Maryland Operating Budget Book, FY 03 & FY04 Request

Bowie State University

Budget Expenditure by Program

Program	Actual 2001	Appropriated 2002	Allowance 2003	Actual 2002	Appropriated 2003	Allowance 2004	Actual 2003	Appropriated 2004	Allowance 2005
Instruction	\$ 15,671,338	\$ 15,616,066	\$ 15,962,793	\$ 16,683,650	\$ 17,090,509	\$ 18,492,553	\$ 17,177,391	\$ 19,499,921	\$ 20,754,676
Research	\$ 140,358	\$ 187,271	\$ 187,830	\$ 92,752	\$ 25,684	\$ 31,109	\$ 37,499	\$ 26,138	\$ 26,752
Public Service	\$ 1,662	\$ -	\$ -	\$ 10,197	\$ 93,160	\$ 88,206	\$ 23,398	\$ -	\$ -
Academic Support	\$ 3,663,954	\$ 5,005,743	\$ 5,030,799	\$ 5,222,306	\$ 4,420,562	\$ 4,485,445	\$ 4,411,445	\$ 4,162,606	\$ 4,188,222
Student Services	\$ 2,462,401	\$ 2,832,646	\$ 2,731,718	\$ 2,692,412	\$ 2,853,088	\$ 2,908,633	\$ 2,852,605	\$ 2,903,340	\$ 3,019,390
Institutional Support	\$ 9,237,605	\$ 9,592,345	\$ 8,913,447	\$ 9,576,691	\$ 10,131,347	\$ 10,501,014	\$ 10,217,771	\$ 10,707,935	\$ 10,700,565
Plant Operations & Maintenance	\$ 6,402,236	\$ 7,243,225	\$ 6,960,575	\$ 6,896,820	\$ 7,190,019	\$ 8,176,156	\$ 7,198,215	\$ 7,405,560	\$ 7,508,381
Auxiliary	\$ 6,348,430	\$ 6,603,659	\$ 6,739,340	\$ 7,176,543	\$ 7,730,244	\$ 9,307,825	\$ 7,382,742	\$ 8,611,329	\$ 8,955,782
Scholarships and Fellowships	\$ 2,151,438	\$ 2,098,442	\$ 2,007,380	\$ 2,521,664	\$ 2,540,380	\$ 2,743,611	\$ 2,607,444	\$ 3,013,060	\$ 3,465,019
Total	\$ 46,079,422	\$ 49,179,397	\$ 48,533,882	\$ 50,873,035	\$ 52,074,993	\$ 56,734,552	\$ 51,908,510	\$ 56,329,889	\$ 58,618,787

Staff Allocations by Program

Program	Actual 2001	Appropriated 2002	Allowance 2003	Actual 2002	Appropriated 2003	Allowance 2004	Actual 2003	Appropriated 2004	Allowance 2005
Instruction	\$ 1,641,804	\$ 1,317,234	\$ 1,356,744	\$ 2,152,364	\$ 1,977,152	\$ 2,031,952	\$ 2,296,684	\$ 2,031,952	\$ 2,031,952
Research	\$ 2,590,351	\$ 2,678,399	\$ 2,758,655	\$ 2,622,166	\$ 2,408,896	\$ 2,493,939	\$ 3,140,040	\$ 2,493,939	\$ 2,493,939
Public Service	\$ -	\$ -	\$ -	\$ 1,031,736	\$ 1,065,424	\$ 1,201,309	\$ 954,320	\$ 1,201,309	\$ 1,201,309
Academic Support	\$ 1,028,913	\$ 525,596	\$ 541,467	\$ 1,352,669	\$ 1,726,285	\$ 1,384,226	\$ 2,785,596	\$ 1,384,226	\$ 1,384,226
Student Services	\$ 569,236	\$ 464,364	\$ 478,295	\$ 930,052	\$ 915,175	\$ 937,287	\$ 791,035	\$ 937,287	\$ 937,287
Institutional Support	\$ 1,494,350	\$ 1,294,405	\$ 1,333,237	\$ 1,603,206	\$ 1,675,974	\$ 1,729,379	\$ 693,467	\$ 1,729,379	\$ 1,729,379
Plant Operations	\$ -	\$ -	\$ -	\$ -	\$ -	\$ -	\$ 171,178	\$ -	\$ -
Auxiliary Enterprise	\$ -	\$ -	\$ -	\$ -	\$ -	\$ -	\$ -	\$ -	\$ -
Scholarships & Fellowships	\$ 2,331,503	\$ 2,330,922	\$ 2,400,850	\$ 3,280,991	\$ 3,631,094	\$ 3,871,908	\$ 3,638,107	\$ 3,871,908	\$ 3,871,908
Total	\$ 9,656,157	\$ 8,610,920	\$ 8,869,248	\$ 12,973,184	\$ 13,400,000	\$ 13,650,000	\$ 14,470,427	\$ 13,650,000	\$ 13,650,000

SOURCE: Maryland Operating Budget Book, FY 03 & FY04 Request

